

Department B — BEEF CATTLE



Department B - Beef Cattle

BILLY McCORMICK, Superintendent
Lewisburg, WV
DEAN HANSON, Assistant Superintendent
Renick, WV

MIKE HENDERSON, Judge
Shorthorn, Gelbvieh,
Hereford & Simmental
Whitman, NE

DALE RAINS, Judge
Angus and Charolais
Mercer, PA

TERRY BURKS, Judge
Open Feeder Steers
Bowling Green, KY

SHADOW SEAMAN
Longhorns
Filer, ID

Total Premiums Offered in Department B—\$53,927.00

SUN	MON	TUES	WED	THUR	FRI	SAT
9	10	11	12	13 10 am: Feeder Calves Arrival	14 FAIR OPENS 8 am-11am: Feeder Calf Weigh-in by 2pm: Longhorn cattle arrival	15 8 am-12 noon: Angus and Limousin Arrival
SOUTHERN STATES LIVESTOCK ARENA: SSLA						
16 8am - 12 noon: Charolais arrival 9am: Longhorn Show	17 8am: Limousin Show 11 am: Feeder Steer Show 2:30 pm: Market Steer Show 6 pm: Feeder Calves, Limousin and Longhorns are released	18 9 am: Angus Show 6 pm: Angus are released	19 8 am - 12 noon: Shorthorn Arrival 9 am: Charolais Show 12 noon: Charolais are released Gelbviehs, Hereford and Simmental may begin to arrive	20 12 noon: Gelbvieh, Hereford, Simmental must be in barns	21 9 am: Shorthorn Show 2 pm: Gelbveih Show	22 9 am: Hereford Show 1 pm: Simmental Show 6 pm: Hereford, Simmental, Gelbvieh, and Shorthorn are released

ADMISSION POLICY - See page 12

FEES - For stall rent and initial bedding \$15.00 per head, including nurse cows, will be charged and must be paid when entries are made. Bark bedding will be used. **DO NOT RESERVE SPACE FOR TACK STALLS. TACK STALLS WILL BE ASSIGNED BY SUPERINTENDENTS.**

STALL SPACE WILL BE ASSIGNED ON THE TOTAL HEAD BROUGHT TO THE FAIR NOT NUMBER ENTERED. SUPERINTENDENTS WILL MAKE ADJUSTMENTS AT CHECK-IN.

RULES

1. ADDITIONAL PREMIUMS **MAY** BE ADDED TO CLASSES WITH MORE ENTRIES THAN PREMIUMS LISTED **QUALITY PERMITTING.**
2. Any exhibitor who requests either a late arrival time or an early dismissal time must make such a request in writing to: Comp. Exhibits, PO Drawer 986, Lewisburg, WV 24901. All such requests will be handled on an individual basis.
3. Special outside tie-out space will be provided and animals will not be allowed to be tied to the outside fence at any time. Stock trailers must be parked in designated areas.
4. **REFER TO HEALTH REGULATIONS ON PAGES 5.**
5. **REGISTRATION: Entries in Department B must be registered in the National Herd Book of the Breed. Registration certificates will be checked against tattoos by the Superintendents, and any discrepancies found will be barred from showing.**
6. In case of sickness or of any cattle that appear to be in an unhealthy condition, the SFWW reserves the right to have them isolated.
7. The date of birth shown on the registration certificate will determine the class in which an animal is shown.
8. **NO EXHIBITOR SHALL BE PERMITTED TO WIN MORE THAN TWO (2) PREMIUM MONEYS IN ANY ONE CLASS.**



Section 1—ABERDEEN ANGUS

Aberdeen Angus judged Tuesday, August 18, 9:00 a.m.

THE 2009 ANGUS SHOW WILL BE A ROLL OF VICTORY SHOW!

Point Recognition Show

PARTICIPATION STATEMENT

The American Angus Association, 3201 Frederick Avenue, St. Joseph, Missouri, will participate in premiums offered for open class Angus breeding cattle classes according to the premium schedule based on the number of head shown. The premium assistance provided by the American Angus Association for participation in this show is in addition to the premiums offered by the show itself. The premium assistance should not be used to offset show expense and shall be included in the premium payments distributed by the show to the exhibitors.

A minimum of 50 head must be shown in the open class division to receive American Angus Association premium participation for the following year.

Premiums from the Association are paid only to registered Angus cattle and only if the registration number is a part of the show report provided to the Association. Therefore, all cattle should be registered at the time of entry to make certain they receive the Association's portion of premiums. The Association does not pay on championship, or any group classes (i.e. get-of-sire, junior get-of-sire or breeder six-head).

Exhibitors must have the original registration certificate on each animal available for inspection at the show. **Electronically stored registration certificates are NOT accepted - only the original certificates issued by the American Angus Association.** Any animal, upon check-in, which does not have a legible permanent identification mark (ear tattoo marks, freeze-branded marks or hot-branded marks) corresponding to the permanent identification mark on the registration certificate, is ineligible to show. Once disqualified due to an incorrect or illegible permanent identification mark, animals cannot be re-tattooed and re-checked at the show.

Any female shown with calf at side, the calf must be the cow's most recent natural calf and the calf must be registered by show date and have the original registration certificate at check-in.

Only one person at a time shall lead animals into the show ring.

Exhibitors who participate in shows that accept premium monies contributed by the American Angus Association are subject to the Association Rules as found in the Breeders Reference Guide of the Association. These rules are found in Part 2; Association Rules. The rules relating directly with the exhibition of Angus cattle are Part 2: Association Rules; Rule 800 Series; including Rule 800 - 811. These rules can be found at www.angus.org.

Any product administered internally or used externally to alter the conformation and/or appearance of an animal for exhibition is prohibited. This includes the covering of white skin, false tail heads (or use of any false hair), use of graphite, powders, hemp or other similar substances externally and steroids, growth stimulants or artificial filling internally. Any animal found to be in violation will be barred from showing. The exhibition of cattle displaying false hair will not be allowed, with the exception of false tail switches.

At any show for which the American Angus Association appropriates funds toward the payment of premiums, no exhibitors, individuals assisting exhibitors or member owners at such show shall be allowed to use any coloring agents, on any animal exhibited. The Association may adopt and implement various tests designed to monitor this prohibition, including but not limited to a "white towel" or "white glove" test. No aerosol cans or other pressurized containers will be allowed in designated make up areas.

All animals exhibited are subject to DNA marker or blood type test to verify accuracy of parentage as covered under the Association Rules and for other testing as required by the individual show.

Authorized representatives of the Association have the authority to enforce the rules set forth herein as well as in the Association Rules, including the barring of a registered animal from a livestock show at which it is to be shown, if there are reasonable grounds to believe a violation has occurred.

OPEN SHOW AMERICAN ANGUS ASSOCIATION

SHOW CLASSIFICATION FOR ANGUS

*THIS CLASSIFICATION IS EFFECTIVE FOR SHOWS
FROM JULY 15, 2009 TO DECEMBER 31, 2009*

Only registered Angus cattle that meet the age requirements listed within this classification are eligible to receive premium participation and be counted in the total number of head shown -- Champion and Reserve Champion placing are not counted in number of head shown.



FEMALE CLASSES

PREMIUMS: (Except Championship Classes)
PREMIUMS LISTED INCLUDE ASSOCIATION SUPPORT

1st	2nd	3rd	4th	5th	6th
\$84	\$74	\$65	\$56	\$52	\$49

Any female that qualifies for female classes in the Association's standard classification are not eligible to show in the cow/calf classes. However, the calf at the side of the female is eligible to show in its respective class.

1. Cow/Calf Class: Cows three (3) years of age and younger, cows must be born January 1, 2006, through August 31, 2007. Calf must be the cow's most recent natural calf and be no more than 280 days of age on the day of the show (calf DOB: on or after 11/11/08).
2. Cow/Calf Class: Cows four (4) years of age and older, cows must be born December 31, 2005, or earlier. Calf must be the cow's most recent natural calf and be no more than 280 days of age on the day of the show (calf DOB: on or after 11/11/08).

3. GRAND CHAMPION COW/CALF PAIR (winners from classes 1 - 2) - Rosette
4. RESERVE GRAND CHAMPION COW/CALF PAIR - Rosette

Grand and reserve grand champion cow/calf pairs do not show for grand champion female and are ineligible to compete in the get-of-sire, junior get-of-sire and breeder's six-head classes.



FEMALE CLASSES (continued)

5. Junior heifer calves calved March 1, 2009, and after
6. Junior heifer calves calved between Feb. 1 and Feb. 28, 2009
7. Junior heifer calves calved between Jan. 1 and Jan. 31, 2009.
8. JUNIOR HEIFER CALF CHAMPION (5 - 7), Rosette
9. RESERVE JUNIOR HEIFER CALF CHAMPION, Rosette
10. Late senior heifer calves calved between Nov. 1 and Dec. 31, 2008
11. Early senior heifer calves calved between Sept. 1 and Oct. 31, 2008
12. SENIOR HEIFER CALF CHAMPION (10 - 11), Rosette
13. RESERVE SENIOR HEIFER CALF CHAMPION, Rosette
14. Late summer yearling heifers calved between July 1 and Aug. 31, 2008
15. Early summer yearling heifers calved between May 1 and June 30, 2008
16. INTERMEDIATE CHAMPION (14 - 15), Rosette
17. RESERVE INTERMEDIATE CHAMPION, Rosette
18. April junior yearling heifers calved between Apr. 1 and Apr. 30, 2008
19. March junior yearling heifers calved between March 1 and March 31, 2008
20. Early junior yearling heifers calved between Feb 1 and Feb. 29, 2008
21. Early junior yearling heifers calved between Jan 1 and Jan 31, 2008
22. JUNIOR CHAMPION FEMALE (18 - 21), Rosette
23. RESERVE JUNIOR CHAMPION FEMALE, Rosette
24. Late senior yearling heifers calved between Nov. 1 and Dec. 31, 2007
25. Early senior yearling heifers calved between Sept. 1 and Oct. 31, 2007
26. SENIOR CHAMPION FEMALE (24 - 25), Rosette
27. RESERVE SENIOR CHAMPION FEMALE, Rosette
28. GRAND CHAMPION FEMALE, (Champions competing), Banner
29. RESERVE GRAND CHAMPION FEMALE (Champions and Reserve Champions competing), Banner



BULL CLASSES

PREMIUMS: (Except Championship Classes)
PREMIUMS LISTED INCLUDE ASSOCIATION SUPPORT
1st 2nd 3rd 4th
 \$84 \$74 \$65 \$56

30. Junior bull calves calved March 1, 2009, and after
31. Junior bull calves calved between Jan. 1 and Feb. 28, 2009
32. JUNIOR BULL CALF CHAMPION (30 - 31), Rosette
33. RESERVE JUNIOR BULL CALF CHAMPION, Rosette
34. Late senior bull calves calved between Nov. 1 and Dec. 31, 2008

35. Early senior bull calves calved between Sept. 1 and Oct. 31, 2008
36. SENIOR BULL CALF CHAMPION (34-35), Rosette
37. RESERVE SENIOR BULL CALF CHAMPION, Rosette
38. Late summer yearling bulls calved between July 1 and Aug. 31, 2008
39. Early summer yearling bulls calved between May 1 and June 30, 2008
40. INTERMEDIATE CHAMPION BULL (38-39), Rosette
41. RESERVE INTERMEDIATE CHAMPION BULL, Rosette
42. April junior yearling bulls calved between Apr. 1 and Apr. 30, 2008
43. March junior yearling bulls calved between March 1 and March 31, 2008
44. Early junior yearling bulls calved between Jan. 1 and Feb. 29, 2008
45. JUNIOR CHAMPION BULL (42-44), Rosette
46. RESERVE JUNIOR CHAMPION BULL, Rosette
47. Senior yearling bulls calved between Sept. 1 and Dec. 31, 2007
48. Summer senior yearling bulls calved between May 1 and Aug. 31, 2007
49. Two-year old bulls calved between Jan. 1 and Apr. 30, 2007
50. SENIOR CHAMPION BULL (47-49), Rosette
51. RESERVE SENIOR CHAMPION BULL, Rosette
52. GRAND CHAMPION BULL —

The Colonel H. B. Moore and Dr. H. B. Moore, Jr. Memorial Trophy — Banner

53. RESERVE GRAND CHAMPION BULL (Champions and Reserve Champions competing)—Banner

GROUP CLASSES

54. Junior Get-of-Sire: Three (3) animals by one (1) sire, both sexes represented shown in Classes 5, 6, 7, 10, 11, 14, 15 and 30, 31, 34, 35, 38 and 39.
55. Get-of-Sire: Four (4) animals by one (1) sire shown in the above classes, both sexes represented.
52. Breeder's Six -Head: The exhibitor of the breeder's six-head must be breeder and first owner, identified by the same member code for the animals exhibited. Cattle owned by other exhibitors may be included provided the exhibitor of the breeder's six-head is the breeder and first owner of the included animal(s). Animals must be exhibited in individual classes. Cattle bred and owned by a junior member(s) may be included if the exhibitor of the breeder's six-head is an individual or married couple and is the parent or legal guardian of the junior member(s).



Section 2—HEREFORD
Herefords judged Saturday, August 22, at 9:00 a.m.
American Hereford Association -
REGIONAL POINT SHOW
Official Hereford Classification for the 2009-2010 Show
Season

Exhibitors in Hereford classes are subject to the Association's special rule on class qualification, and any animal without a legible tattoo will not be eligible for show. All Hereford animals must be officially recorded at show time to be eligible to show. Entries with registrations "Pending" or "Applied for" will be ineligible to show.

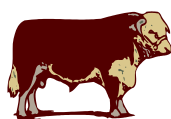
HEIFER CLASSES

PREMIUMS: (Except Championship Classes)

1st	2nd	3rd	4th	5th	6th
\$70	\$60	\$50	\$43	\$39	\$36

1. Spring Heifer Calves calved on or after March 1, 2009
2. Junior Heifer Calves calved between January 1 and February 28, 2009
3. CHAMPION JUNIOR HEIFER CALF, winners of classes 1 and 2 competing - Rosette
4. RESERVE CHAMPION JUNIOR HEIFER CALF, from the remaining first prize females in Class 3 plus second prize female in the Junior Heifer Calf champion's class - Rosette
5. Winter Heifer Calves calved between November 1 and December 31, 2008
6. Senior Heifer Calves calved between September 1 and October 31, 2008.
7. CHAMPION FALL HEIFER CALF, winners of classes 5 and 6 competing - Rosette
8. RESERVE CHAMPION FALL HEIFER CALF, from the remaining first prize females in Class 7 plus second prize female in the Fall Heifer Calf champion's class - Rosette
9. Late Summer Yearling Heifers calved between July 1 and August 31, 2008
10. Early Summer Yearling Heifers calved between May 1 and June 30, 2008
11. CHAMPION INTERMEDIATE HEIFER, winners of classes 9 and 10 competing - Rosette
12. RESERVE CHAMPION INTERMEDIATE HEIFER, from the remaining first prize females in Class 11 plus second prize female in the Intermediate champion's class - Rosette
13. Spring Yearling Heifers calved between March 1 and April 30, 2008
14. CHAMPION SPRING YEARLING HEIFER, winner of class 13 competing - Rosette
15. RESERVE CHAMPION SPRING YEARLING HEIFER, from the remaining first prize females in Class 14 plus second prize female in the Yearling Heifer champion's class - Rosette
16. Junior Yearling Heifers calved between January 1 and February 29, 2008
17. CHAMPION JUNIOR YEARLING HEIFER, winner of class 16 competing - Rosette
18. RESERVE CHAMPION JUNIOR YEARLING HEIFER, from the remaining first prize females in Class 17 plus second prize female in the Yearling Heifer champion's class - Rosette
19. Senior Yearling Heifers calved between September 1 and December 31, 2007.
20. CHAMPION SENIOR HEIFER, winner of class 19 competing - Rosette
21. RESERVE CHAMPION SENIOR HEIFER, from the remaining first prize females in Class 19 plus second prize female in the Senior Heifer champion's class - Rosette

22. Cow/Calf - (Any female older than above ages with a calf at side.) Calf older than 270 days of age on the show date is not eligible to show in cow/calf class. Calf is eligible for individual classes but must be entered in the appropriate class.
Cow/calf does not compete for overall champion female.
23. COW/CALF CHAMPION - Rosette
24. COW/CALF RESERVE CHAMPION - Rosette
25. GRAND CHAMPION HEIFER - (selected from the Junior, Fall, Intermediate, Spring Yearling, Junior Yearling and Senior Champions) - Banner
26. RESERVE GRAND CHAMPION HEIFER - (from the remaining Junior, Fall, Intermediate, Spring Yearling, Junior Yearling and Senior Champions plus the female that stood Reserve to the Grand Champion) - Banner



BULL CLASSES

PREMIUMS: (Except Championship Classes)

1st	2nd	3rd	4th
\$70	\$60	\$50	\$43

27. Spring Bull Calves calved on or after March 1, 2009
28. Junior Bull Calves calved between January 1 and February 28, 2009
29. CHAMPION JUNIOR BULL CALF, winners of classes 27 and 28 competing - Rosette
30. RESERVE CHAMPION JUNIOR BULL CALF, from the remaining first prize bulls in Class 29 plus second prize bull in the Junior Bull Calf champion's class - Rosette
31. Winter Bull Calves calved between November 1 and December 31, 2008
32. Senior Bull Calves calved between September 1 and October 31, 2008
33. CHAMPION FALL BULL CALF, winners of classes 31 and 32 competing - Rosette
34. RESERVE CHAMPION FALL BULL CALF, from the remaining first prize bulls in Class 33 plus second prize bull in the Fall Bull Calf champion's class - Rosette
35. Summer Yearling Bulls calved between May 1 and August 31, 2008.
36. Spring Yearling Bulls calved between March 1 and April 30, 2008.
37. Junior Yearling Bulls calved between Jan 1 and Feb 29, 2008.
38. CHAMPION YEARLING BULL, winners from classes 35, 36 and 37 - Rosette
39. RESERVE CHAMPION YEARLING BULL, from the remaining first prize bulls in Class 38 plus second prize bulls in the Yearling Bull champion's class - Rosette
40. Senior Yearling Bulls calved between September 1 and December 31, 2007.
41. Two-year Old Bulls calved between January 1 and August 31, 2007.
42. CHAMPION SENIOR BULL, winners from classes 40 and 41 - Rosette
43. RESERVE CHAMPION SENIOR BULL, from the remaining first prize bulls in Class 42 plus second prize bull in the Senior Bull champion's class - Rosette
44. GRAND CHAMPION BULL - (selected from the Junior, Fall, Yearling and Senior Champions) - Banner
45. RESERVE GRAND CHAMPION BULL - (from the remaining Junior, Fall, Yearling and Senior Champions plus the bull that stood Reserve to the Grand Champion) - Banner

GROUP CLASSES

46. Get-of-Sire: Four animals shown in above single entry classes with both sexes represented and all to be the progeny of one sire. It is permissible to use either the cow or calf from a cow/calf pair for the Get-of-Sire. Get of Sire may be comprised of animals from one or more owners.
47. Best Six-Head: *Owned by Exhibitor* - All animals must have been shown in their respective single entry classes and they must be owned by exhibitor or by a member of his/her immediate family. A cow/calf will be considered as two-head in the Best Six-Head class.

48. **PREMIER EXHIBITOR** - Awarded with the following point system:
1st place=5 points; 2nd place=4 points; 3rd place=3 points; 4th place=2 points; and 5th place=1 point. No points will be given for champions. Points will be awarded for the Best Six-Head for Premier Exhibitor - Banner. No premium monies given.
49. **PREMIER BREEDER** - Awarded with the following point system: 1st place=5 points; 2nd place=4 points; 3rd place=3 points; 4th place=2 points; and 5th place=1 point. No points will be given for champions. No points will be awarded for the Best-Six Head for the Premier Breeder - Banner. No premium monies given.

Section 3 – SHORTHORN

Shorthorns judged Friday, August 21, 9:00 a.m

(REFER TO HEALTH REGULATIONS ON PAGE 5.)

All cattle must be purebred to be eligible to show.

No exhibitor shall be permitted to win more than two prizes in any one class.

All animals must be registered as the property of the exhibitor in the records of the ASA by the time of the Fair or Show.

Individual animals shown in all of the group classes listed below must have been entered and shown in one of the following classes for single animals. Multiple owned animals must be exhibited in the name of all owners.

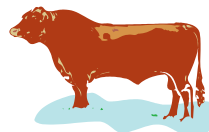
Family bred and raised animals entered by juniors in Junior Classes and subsequently entered in Open classes may be treated as family entries in group classes.

All Shorthorns and Polled Shorthorns are subject to a tattoo inspection by show officials. All Shorthorns and Polled Shorthorns are also subject to an age inspection if deemed necessary and the decision of the examining veterinarian is final. Use of artificial fins on show animals is not permitted.

HEIFER CLASSES

PREMIUMS: (Except Championship Classes)

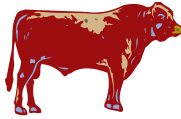
1st	2nd	3rd	4th	5th	6th
\$89	\$78	\$67	\$58	\$54	\$50



1. Late Spring Heifer Calves calved after May 1, 2009
2. Early Spring Heifer Calves calved between March 1 and April 30, 2009.
3. Junior Heifer Calves calved between January 1 and February 28, 2009
4. JUNIOR HEIFER CALF CHAMPION, winners of classes 1, 2 and 3 competing - Rosette
5. RESERVE JUNIOR HEIFER CALF CHAMPION, from the remaining first prize females in Class 4 plus second prize female in the Junior Heifer Calf champion's class - Rosette
6. Winter Heifer Calves calved between November 1 and December 31, 2008
7. Senior Heifer Calves calved between September 1 and October 31, 2008
8. SENIOR HEIFER CALF CHAMPION, winners of classes 6 and 7 competing - Rosette
9. RESERVE SENIOR HEIFER CALF CHAMPION, from the remaining first prize females in Class 8 plus second prize female in the Senior Heifer Calf champion's class - Rosette
10. Summer Yearling Females calved between July 1 and August 31, 2008
11. Late Spring Yearling Females calved between May 1 and June 30, 2008
12. INTERMEDIATE CHAMPION FEMALE, winners of classes 10 and 11 competing - Rosette

13. RESERVE INTERMEDIATE CHAMPION FEMALE, from the remaining first prize females in Class 12 plus second prize female in the Intermediate champion's class - Rosette
 14. Early Spring Yearling Females - calved between March 1 and April 30, 2008
 15. JUNIOR CHAMPION FEMALE, winners of class 14 competing - Rosette.
 16. RESERVE JUNIOR CHAMPION FEMALE, from the remaining first prize females in Class 15 plus second prize female in the Junior Champion's class - Rosette.
 17. Junior Yearling Females calved between January 1 and February 29, 2008
 18. Senior Yearling Females calved between September 1 and December 31, 2007
 19. SENIOR CHAMPION FEMALE, winners of classes 17 and 18 competing - Rosette.
 20. RESERVE SENIOR CHAMPION FEMALE, from the remaining first prize females in Class 19 plus second prize female in the Senior champion's class - Rosette.
 21. GRAND CHAMPION FEMALE - (selected from the Junior Calf, Senior Calf, Intermediate, Junior, and Senior Champion females) - Banner
 22. RESERVE GRAND CHAMPION FEMALE - (chosen from Junior Calf, Senior Calf, Intermediate, Junior and Senior Champion and Reserve Champion females) - Banner
 23. Group of Two Females - **bred and owned or co-owned** by the breeder (exhibitor). (Four moneys only)
- Senior/Junior Yearling Pregnancy Rule for exhibitors at all Open shows:**
 Any senior/junior yearling female 28 months of age or older on or before the date of the show must have a natural calf at side and must be shown with such. All females 20 months of age on or before the date of the show must have a 60 day pregnancy verification signed by an accredited, non-owner veterinarian at the time the female is processed for the show. Exhibitors may be asked to present said verification upon the request of the Show official. If verification cannot be produced, the female may be allowed to participate if the exhibitor can produce a qualified veterinarian to examine the female at the show site, and verify a 60-day pregnancy. Any infractions against this rule will lead to disqualification of that animal for that specific show.

BULL CLASSES



PREMIUMS: (Except Championship Classes)

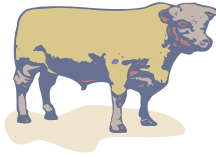
1st	2nd	3rd	4th
\$89	\$78	\$67	\$58

24. Late Spring Bull Calves calved after May 1, 2009
25. Early Spring Bull Calves calved between March 1 and April 30, 2009
26. Junior Bull Calves calved between January 1 and February 28, 2009
27. JUNIOR BULL CALF CHAMPION, winners from Classes 24, 25 and 26 competing) - Rosette
28. RESERVE JUNIOR BULL CALF CHAMPION, from the remaining first prize bulls in class 27 plus second prize bull in the Junior Bull Calf Champion's class - Rosette
29. Winter Bull Calves calved between November 1 and December 31, 2008
30. Senior Bull Calves calved between September 1 and October 31, 2008
31. SENIOR BULL CALF CHAMPION, winners from classes 29 and 30 competing - Rosette
32. RESERVE SENIOR BULL CALF CHAMPION, from the remaining first prize bulls in class 31 plus second prize bull in the Senior Bull Calf Champion's class - Rosette

33. Summer Yearling Bulls calved between July 1 and August 31, 2008
34. Late Spring Yearling Bulls calved between May 1 and June 30, 2008
35. INTERMEDIATE CHAMPION BULL, winners from classes 33 and 34 competing - Rosette
36. RESERVE INTERMEDIATE CHAMPION BULL, from the remaining first prize bulls in class 35 plus second prize bull in the Intermediate Champion Bull's class - Rosette
37. Early Spring Yearling Bulls calved between March 1 and April 30, 2008
38. Junior Yearling Bulls calved between January 1 and February 29, 2008.
39. JUNIOR CHAMPION BULL, winners from class 37 and 38 competing - Rosette
40. RESERVE JUNIOR CHAMPION BULL, from the remaining bulls in class 39 plus the second prize bull in the Junior Champion Bull's Champion class - Rosette
41. Senior Yearling Bulls calved between July 1 and December 31, 2007
42. Two-Year-Old Bulls calved between January 1 and June 30, 2007
43. SENIOR CHAMPION BULL, winners from classes 41 and 42 competing - Rosette
44. RESERVE SENIOR CHAMPION BULL, from the remaining first prize bulls in class 43 plus second prize bull in the Senior Champion Bull's class - Rosette
45. GRAND CHAMPION BULL (selected from Junior Calf, Senior Calf, Intermediate, Junior and Senior Champion Bulls) - Banner
46. RESERVE GRAND CHAMPION BULL (Remaining Champions and Reserve Champion to Grand Champion competing) - Banner

GROUP CLASSES

47. Group of Two Bulls: **Bred and owned or co-owned** by the breeder (exhibitor).
48. Super Cow Class: Class should consist of two (2) offspring of **either or same** sex of show age classification. Offspring **do not** need to be owned by the same exhibitor. No more than one pair from each cow can win a prize in the class.
49. Get-of-Sire: Class should consist of four offspring of **either or same** sex of any age from the same sire. Offspring **do not** need to be owned by the same exhibitor. No more than one group from each sire can win a prize in the class.
50. Best Six-Head: **Owned or co-owned** by exhibitor.



SECTION 4—CHAROLAIS

Charolais judged Monday, August 19, 9:00 pm

American-International Charolais Association (AICA) will pay 20% of the premiums awarded.
2009 FALL SHOW CLASSIFICATIONS
June 1, 2009-December 31, 2009

Department B - Charolais

SPECIAL RULES

All animals to be eligible for an Open Charolais Breeding Class must be purebred and registered with American-International Charolais Association (AICA). Only bona fide (original) certificates of registration will be accepted as evidence of registration and ownership; **NO PHOTOCOPIES.**

An animal is eligible to enter or compete in an open Charolais breeding class if registered in country of origin outside the United States and is eligible for purebred registry in the AICA Herdbook.

All animals to be eligible may be approved by a sifting committee designated by the AICA. Stall space will not be provided for any Charolais cattle that have not been accepted by the sifting committee.

All animals are subject to a medical examination in order to determine age, and each animal will be present in the show ring in its natural conformation without alteration or modification. Use of artificial tail heads is not permitted.

Any animal not having a legible tattoo or firebrand number is ineligible and will be barred from showing.

Bulls from classes 38, 39, 42, 43 and 44 must have a valid, satisfactory semen test certificate in possession. This certificate is valid for the entire show season.

All animals shown in individual classes must be weaned, with the exception of the Cow/Calf class and calves at the side of females calved after September 1, 2007. Calves at side must be purebred and registered with the AICA. Females calved after September 1, 2007, must show in individual female class appropriate to age. Nurse cows are not permitted.

All females 20 months and older exhibited at AICA sanctioned shows must be accompanied by a certificate of pregnancy from a licensed veterinarian or have produced fertile eggs as certified in a written statement by a licensed veterinarian or embryologist or have a calf at side.

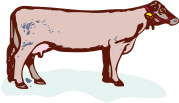
AICA requires that all animals be shown with a halter and suggests that all bulls be shown with a nose lead.

ALL EXHIBITS OF CHAROLAIS BREEDING CATTLE SHALL BE GOVERNED BY THE AICA RULES AND REGULATIONS, ARTICLE XV, TITLED EXHIBITION OF ANIMALS. THE INSPECTION OF EXHIBIT CATTLE IS SPECIFIED IN ARTICLE XV, PARAGRAPH C, OF THE ASSOCIATION RULES AND REGULATIONS AND NON-COMPLIANCE OF EXHIBIT INSPECTION IS SPECIFIED IN PARAGRAPH D OF THE SAME ARTICLE XV.

ARTICLE XV, PARAGRAPH B, POINT 2: "Each animal will be presented in its natural conformation and structure without alteration or modification. Alteration or modification shall be defined to include any surgical, chemical, electrical or other (including banding or other circulatory constriction) appearance change for cosmetic purpose, save only branding, tattooing, foot trimming or dehorning. The act of artificially filling animals internally, which would include stomach pumping, drench tubes, or any other method per os (by esophagus) is prohibited. Silicone injection or other injection for cosmetic purpose shall be prohibited. Anabolic steroid use shall likewise be prohibited and any animal testing positive for anabolic steroid or diuretic use shall be presumed to be altered and modified."

ALL OTHER RULES OF SHOW APPLY.

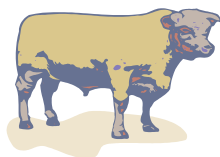
Effective October 22, 2004, at any American-International Charolais Association (AICA) sanctioned show (including shows receiving AICA premium funding and/or qualifying as a Roll of Excellence Show), the use of a coloring agent, flock and powder is prohibited. Use of these products will result in the immediate disqualification of a given animal at such show.



FEMALES
PREMIUMS: (Except Championship Classes)

1st	2nd	3rd	4th	5th
\$58	\$53	\$48	\$43	\$38

1. Spring heifer calves after March 1, 2009.
2. Junior heifer calves January 1-February 28, 2009.
3. JUNIOR CALF CHAMPION FEMALE - Rosette
4. RESERVE JUNIOR CALF CHAMPION FEMALE, Rosette
5. Winter heifer calves, November 1-December 31, 2008.
6. Senior heifer calves, September 1-October 31, 2008.
7. SENIOR CALF CHAMPION FEMALE - Rosette.
8. RESERVE SENIOR CALF CHAMPION FEMALE, Rosette.
9. Late summer yearling females, July 1-August 31, 2008.
10. Summer yearling females, May 1-June 30, 2008.
11. INTERMEDIATE CHAMPION FEMALE - Rosette.
12. RESERVE INTERMEDIATE CHAMPION FEMALE - Rosette.
13. Late spring yearling females, April 1-April 30, 2008.
14. Early spring yearling females, March 1-March 31, 2008.
15. JUNIOR CHAMPION FEMALE - Rosette.
16. RESERVE JUNIOR CHAMPION FEMALE - Rosette.
17. Junior yearling females January 1-February 29, 2008.
18. Senior yearling females, September 1-December 31, 2007.
19. SENIOR CHAMPION FEMALE - Rosette.
20. RESERVE SENIOR CHAMPION FEMALE - Rosette
21. Cow/Calf - Calf must be cow's natural calf, not embryo transplant. Calf to be no more than 250 days of age by day of show. Calf must be purebred and registered with the AICA. No age restriction on cow. Calf not eligible to compete in individual calf classes if shown with dam. Pair is eligible for Grand or Reserve Grand Champion Female. Cow and/or Calf may be included in group class entries as individual, not as a pair comprising a single animal unit.
22. CHAMPION COW/CALF - Rosette
23. RESERVE CHAMPION COW/CALF - Rosette
24. GRAND CHAMPION FEMALE - Banner
25. RESERVE GRAND CHAMPION FEMALE - Banner



BULL CLASSES

PREMIUMS: (Except Championship Classes)

1st 2nd 3rd 4th

\$58 \$53 \$48 \$43

- 26. Spring bull calves, March 1, 2009 and after.
- 27. Junior bull calves, January 1-February 28, 2009.
- 28. JUNIOR CALF CHAMPION BULL - Rosette
- 29. RESERVE JUNIOR CALF CHAMPION BULL - Rosette
- 30. Winter bull calves, November 1-December 31, 2008.
- 31. Senior bull calves, September 1-October 31, 2008.
- 32. SENIOR CALF CHAMPION BULL - Rosette.
- 33. RESERVE SENIOR CALF CHAMPION BULL - Rosette.
- 34. Late summer yearling bulls, July 1-August 31, 2008.
- 35. Summer yearling bulls, May 1-June 30, 2008.
- 36. INTERMEDIATE CHAMPION BULL - Rosette.
- 37. RESERVE INTERMEDIATE CHAMPION BULL - Rosette
- 38. Spring yearling bulls, March 1 - April 30, 2008.
- 39. Junior yearling bulls, January 1 - February 29, 2008.
- 40. JUNIOR CHAMPION BULL - Rosette.
- 41. RESERVE JUNIOR CHAMPION BULL - Rosette
- 42. Senior yearling bulls, September 1 - December 31, 2007.
- 43. Summer senior yearling bulls, May 1 - August 31, 2007.
- 44. Two-year-old bulls, January 1 - April 30, 2007.
- 45. SENIOR CHAMPION BULL - Rosette
- 46. RESERVE SENIOR CHAMPION BULL - Rosette
- 47. GRAND CHAMPION BULL - Banner
- 48. RESERVE GRAND CHAMPION BULL - Banner

GROUP CLASSES

PREMIUMS: 1st: \$58 2nd: \$53 3rd: \$48 4th: \$43

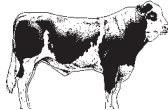
- 49. Produce of Dam - Two (2) animals, either sex, from one dam to be shown in individual classes to be eligible. May be owned by more than one exhibitor.
- 50. Junior Get-of-Sire - Three (3) animals all by one sire, both sexes to be represented, may be owned by more than one exhibitor. All animals must be shown in their individual classes to be eligible. Bulls from classes 26, 27, 30 or 31; females from classes 1, 2, 5 or 6.
- NEW!** 51. Get-of-Sire - Three (3) animals all by one sire, both sexes to be represented, may be owned by more than one exhibitor. All animals must be shown in their individual classes to be eligible. This Get must have a minimum of two animals born before September 1, 2008.
- 52. Breeders' Herd - Four (4) animals, either sex, bred and owned by exhibitor. All animals must be shown in their individual classes to be eligible.
- 53. Group of Five Head - Five (5) animals of either sex owned by the exhibitor from either the Calf Classes, Junior Classes, the Senior Classes or a combination.

Section 5—SIMMENTAL

Simmentals judged Saturday, August 22, 1:00 p.m.

Rules

1. All animals must be registered with the American Simmental Association.
2. Any animal not having a legible, permanent identification corresponding to that listed on the registration certificate is ineligible to compete.
3. Exhibitors must have the animal's original ASA registration certificate or owner's copy of the animal's registration application certificate as appropriate for the animal being shown.
4. All cattle will be subject to age determination by mouthing.
5. All bulls 15 months of age and older should have veterinary proof of semen test/breeding soundness exam and proven as a satisfactory breeder. All bulls 12 months of age or older must be shown with a nose lead or ring. All females 18 months of age or older must be: a)certified pregnant by a licensed non-owner veterinarian, or b)have certification that she has been used in embryo transfer.

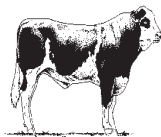


FEMALES

PREMIUMS (Except Championship Classes)

1st	2nd	3rd	4th	5th
\$53	\$48	\$44	\$39	\$35

1. Junior Heifer Calves, calved after January 1, 2009.
2. Winter Heifer Calves, calved November 1-December 31, 2008.
3. Senior Heifer Calves, calved September 1-October 31, 2008.
4. CHAMPION HEIFER CALF, Winners of Classes 1, 2 and 3 competing - Rosette.
5. RESERVE CHAMPION HEIFER CALF, remaining winners and second place heifer from Champion's Class competing - Rosette.
6. Late Summer Yearling Heifer, calved July 1-August 31, 2008.
7. Early Summer Yearling Heifer, calved May 1-June 30, 2008.
8. Late Junior Yearling Heifer, calved March 1-April 30, 2008.
9. CHAMPION INTERMEDIATE HEIFER, winners of Classes 6, 7 and 8 competing -Rosette.
10. RESERVE CHAMPION INTERMEDIATE HEIFER, remaining winners and second place heifer from Champion's class competing - Rosette.
11. Early Junior Yearling Heifer, calved January 1-February 29, 2008.
12. Senior Yearling Heifer, calved September 1-December 31, 2007.
13. SENIOR CHAMPION, Winners of Classes 11 and 12 competing - Rosette.
14. RESERVE SENIOR CHAMPION, remaining winners and second place animal from champion's class competing - Rosette.
15. GRAND CHAMPION HEIFER - Banner.
16. RESERVE GRAND CHAMPION HEIFER - Banner.



BULL CLASSES

PREMIUMS: (Except Championship Classes)

1st 2nd 3rd 4th
\$53 \$48 \$44 \$39

- 17. Junior Bull Calves, calved after January 1, 2009.
- 18. Winter Bull Calves, calved November 1-December 31, 2008.
- 19. Senior Bull Calves, calved September 1-October 31, 2008.
- 20. CHAMPION BULL CALF, winners of Classes 17, 18 and 19 competing - Rosette.
- 21. RESERVE CHAMPION BULL CALF, remaining winners and second place bull from Champion's class competing - Rosette.
- 22. Late Summer Yearling Bull, calved July 1-August 31, 2008.
- 23. Early Summer Yearling Bull, calved May 1-June 30, 2008.
- 24. Late Junior Yearling Bull, calved March 1-April 30, 2008.
- 25. INTERMEDIATE CHAMPION BULL, winners of Classes 22, 23 and 24 competing - Rosette.
- 26. RESERVE INTERMEDIATE CHAMPION BULL, remaining winners and second place bull from Champion's class competing - Rosette.
- 27. Early Junior Yearling Bull, calved January 1-February 29, 2008.
- 28. Senior Yearling Bull, calved September 1-December 31, 2007.
- 29. Two-Year-Old Bull, calved January 1-August 31, 2007.
- 30. SENIOR CHAMPION BULL, winners of Classes 27, 28 and 29 competing - Rosette.
- 31. RESERVE CHAMPION BULL, remaining winners and second place bull from Champion's Class competing - Rosette.
- 32. GRAND CHAMPION BULL - Banner.
- 33. RESERVE GRAND CHAMPION BULL - Banner.

GROUP CLASSES

PREMIUMS

1st 2nd 3rd 4th
\$53 \$48 \$44 \$39

- 34. Cow and Calf Class: Cow is to be in lactating stage and is to be exhibited with natural calf at side (calf may have been artificially inseminated but not embryo transplant). Calf must have been born January 1, 2009, or later and must be nursing.
- 35. Get-of-Sire: Four (4) animals by one sire shown in the above classes, both sexes represented.
- 36. Junior Get-of-Sire: Three (3) animals by one sire, both sexes represented, calved after May 1, 2008.
- 37. Produce of Dam: Two (2) animals, either sex, from one dam to be shown in individual classes to be eligible. Both owned by exhibitor.
- 38. Breeder's Herd: Four (4) animals, both sexes to be represented with a minimum of two (2) females. Must be owned or co-owned by exhibitor and exhibitor must be breeder or co-breeder. Animals must have been shown in breeding classes.

Section 6—LIMOUSIN

Limousin judging Monday, August 17, 8:00 a.m.

Level 2 MEDAL OF EXCELLENCE (MOE) Show North American Limousin Foundation Standard Rules and Regulations for the Exhibition of Limousin Cattle 2009

1. All animals must be registered with the North American Limousin Foundation (NALF). Embryo Transfer (ET) calves with pending registration must have parentage-verification paperwork in the NALF system.
- NEW!** 2. Animals must be 75% Limousin (NALF percentage, not actual) or greater as indicated on orange NALF registration certificates or purple-papered Lim-Flex® cattle as indicated by NALF registration certificates. Percentage, fullblood, purebred and Lim-Flex® cattle shall compete in the same classes and championships.
3. Animals must be properly tattooed and will be inspected at the show. Tattoos must be legible and match the registration certificates. If an animal's tattoo is not legible and cannot be read upon check-in, it will be ineligible to show and not be allowed to return to check-in with a new or corrected tattoo.
4. To maintain a high degree of confidence in Limousin shows, NALF reserves the right to disqualify any animal that has been fitted in an unethical manner. Unethical fitting shall include the following:
 - a) any use of paints, hair coloring conditioners, colored show foam, graphite, colored powders or other substances; animals may be subject to a white towel test;
 - b) the addition of any hair or hair like substances, including false tailheads and false polls (false tail switches are allowed);
 - c) The cutting, tearing or gluing of the hide or underneath the hide or removal of tissue in an attempt to alter the shape of the animal or the injection of any gas, solid or liquid under the hide to alter the normal conformation;
 - d) any products/solutions/liquids administered internally or externally to alter the conformation of the animal is prohibited. That includes the use of steroids, growth stimulants, and the act of artificially filling animals internally, which would include stomach pumping, drench tubes, or any other method.

EXCEPTIONS: In the case of severely sick or dehydrated animals, the exhibitor may have fluids or electrolytes administered by the licensed official show veterinarian with the approval of the show superintendent and/or North American Limousin Foundation representative. This exception is not applicable on show day or weigh-in/check-in day.
5. Bulls older than one (1) year must show with a nose lead. The Limousin show superintendent and the show management reserve the right to disqualify animals deemed unmanagable.
6. Protests against exhibitors, individual animals or fitting violations must be submitted in writing and signed by five (5) active members of the North American Limousin Foundation and presented to the show superintendent within 12 hours of the show's completion.
7. The North American Limousin Foundation reserves the right to inspect ("mouth") animals for dental development.
8. NALF reserves the right to collect hair samples from any animal.
9. Classes and championship breaks will be determined after all cattle have been checked in. No class shall contain more than 20 head or have an age spread of more than 60 days unless the animals are older than two (2) years.

- NEW!** 10. Calves exhibited alongside dams in the cow/calf division **are eligible** to show as individuals only in the Lim-Flex® show if they are registered and qualify as determined by purple registration papers from NALF.
- 11. All animals shown must be solid red or black above the flanks, excluding birth marks.
- 12. All cattle will be checked in before the show.
- NEW!** 13. If a show does not abide by the NALF MOE show rules, exhibitors won't be awarded points for that show.
- 14. The West Virginia Limousin Association will pay 10% of the premiums offered.

OTHER REQUIREMENTS

The following performance-data-submission requirements must be met by Dec. 1 to receive medal of Excellence points.

- 1. a. Birth weight (bulls & heifers)
- b. Weaning weight (bulls & heifers)
- c. Yearling weight (bulls & heifers)
- d. Yearling scrotal circumference (bulls only)
- e. Pregnancy test (females older than 600 days at seasons end)
- f. Breeding Soundness Exam and Semen test (bulls older than 400 days old)

NOTE: Failure to have performance data on file at NALF by the deadline will result in disqualification from the MOE program, and no points will be awarded. It is the responsibility of the breeder/owner/exhibitor to submit that information without special requests from NALF.

Credibility Requirements:

To maintain a high degree of integrity and credibility in all Limousin shows, all owners and exhibitors are expected to adhere to all NALF rules and regulations regarding the exhibition of Limousin cattle and to adhere to rules and regulations of particular shows, fairs and exhibitions.

Level 2 Medal of Excellence Point Distribution

The new point distribution for Medal of Excellence shows, as introduced in 2007, will depend on the number of head exhibited at each approved MOE show (other than the four (4) major shows). Points will be awarded as follows:

<u>Number of entries shown</u>	<u>MOE points awarded</u>
51 or more entries	1st in class = 15 points 2nd in class = 13 points 3rd in class = 11 points 4th in class = 9 points 5th in class = 7 points 6th in class = 5 points 7th in class = 4 points 8th in class = 3 points 9th in class = 2 points 10th in class = 1 point
Division Champion/Division Reserve	15 points/12points
Grand Champion/Reserve Grand	15 points/12 points

<u>Number of entries shown</u>	<u>MOE points awarded</u>
26 to 50 entries shown	1st in class = 10 points 2nd in class = 8 points 3rd in class = 6points

	4th in class = 4 points
	5th in class = 2 points
Division Champion/Division Reserve	10 points/8 points
Grand Champion/Reserve Grand	10 points/8 points
<u>25 or fewer entries</u>	1st in class = 5 points
	2nd in class = 4 points
	3rd in class = 3 points
	4th in class = 2 points
	5th in class = 1 point
Division Champion/Division Reserve	5 points/3 points
Grand Champion/Reserve Grand	5 points/3 points

FEMALES

PREMIUMS (Except Championship Classes)

PREMIUMS LISTED INCLUDE ASSOCIATION SUPPORT

1st	2nd	3rd	4th	5th	6th
\$50	\$45	\$40	\$35	\$30	\$25



1. Spring Junior Heifer Calf, calved on or after March 1, 2009.
2. Junior Heifer Calf, calved between Jan. 1 and Feb. 28, 2009.
3. DIVISION 1 CHAMPION FEMALE - Rosette
4. DIVISION 1 RESERVE CHAMPION FEMALE - Rosette
5. Winter Senior Heifer Calf, calved between Nov. 1 and Dec. 31, 2008.
6. Senior Heifer Calf, calved between Sept. 1 and Oct. 31, 2008.
7. DIVISION 2 CHAMPION FEMALE - Rosette
8. DIVISION 2 RESERVE CHAMPION FEMALE - Rosette
9. Late Summer Yearling Female, calved between July 1 and Aug. 31, 2008.
10. Summer Yearling Female, calved between May 1 and June 30, 2008.
11. DIVISION 3 CHAMPION FEMALE - Rosette
12. DIVISION 3 RESERVE CHAMPION FEMALE - Rosette
13. April Junior Yearling Female, calved between April 1 and April 30, 2008.
14. March Junior Yearling Female, calved between March 1 and March 31, 2008.
15. Junior Yearling Female, calved between Jan. 1 and Feb 29, 2008.
16. DIVISION 4 CHAMPION FEMALE - Rosette
17. DIVISION 4 RESERVE CHAMPION FEMALE - Rosette
18. Late Yearling Female, calved between Nov. 1 and Dec 31, 2007.
19. Fall Yearling Female, calved between Sept. 1 and Oct. 31, 2007.
20. Summer Junior Yearling Female, calved between July 1 and August 31, 2007.
- NEW!** 21. Cow/Calf Pair: Cows must be purple-papered Lim-Flex animals or at least 75 percent Limousin blood with natural calves at side. Calves must be registered Limousin, percentage Limousin or Lim-Flex animals and not more than 250 days old on the show date. The class may be broken into two (2) or more classes at the show staff's discretion.

- 22. DIVISION 5 CHAMPION FEMALE - Rosette
- 23. DIVISION 5 RESERVE CHAMPION FEMALE - Rosette
- 24. GRAND CHAMPION FEMALE (Division 1, 2, 3, 4 and 5) - Banner
- 25. RESERVE GRAND CHAMPION FEMALE(Division 1, 2, 3, 4, and 5) - Banner

BULL CLASSES

PREMIUMS (Except Championship Classes)

PREMIUMS LISTED INCLUDE ASSOCIATION SUPPORT

1st 2nd 3rd 4th

\$50 \$45 \$40 \$35

- 26. Spring Junior Bull Calf, calved on or after March 1, 2009.
- 27. Junior Bull Calf, calved between Jan. 1-Feb. 28, 2009.
- 28. DIVISION 1 CHAMPION BULL - Rosette
- 29. DIVISION 1 RESERVE CHAMPION BULL - Rosette
- 30. Winter Bull Calf, calved between Nov. 1-Dec. 31, 2008.
- 31. Senior Bull Calf, calved between Sept. 1-Oct. 31, 2008.
- 32. DIVISION 2 CHAMPION BULL - Rosette
- 33. DIVISION 2 RESERVE CHAMPION BULL - Rosette
- 34. Late Summer Yearling Bull, calved between July 1-Aug. 31, 2008.
- 35. Summer Yearling Bull, calved between May 1-June 30, 2008.
- 36. DIVISION 3 CHAMPION BULL - Rosette
- 37. DIVISION 3 RESERVE CHAMPION BULL - Rosette
- 38. Spring Yearling Bull, calved between March 1-April 30, 2008.
- 39. Junior Yearling Bull, calved between Jan. 1-Feb. 29, 2008.
- 40. DIVISION 4 CHAMPION BULL - Rosette
- 41. DIVISION 4 RESERVE CHAMPION BULL - Rosette
- 42. Senior Yearling Bull, calved between Sept. 1-Dec. 31, 2007.
- 43. Summer Senior Yearling Bull, calved between May 1-Aug. 31, 2007.
- 44. Two-Year Old Bulls, calved between January 1-April 30, 2007.
- 45. DIVISION 5 CHAMPION BULL - Rosette
- 46. DIVISION 5 RESERVE CHAMPION BULL - Rosette
- 47. GRAND CHAMPION BULL - (Division 1, 2, 3, 4, 5) - Banner
- 48. RESERVE GRAND CHAMPION BULL - (Division 1, 2, 3, 4, 5) - Banner

GROUP CLASSES

- 49. Produce-of-Dam: Two (2) head shown in individual classes produced by one dam. May be owned by different exhibitors. Both sexes may be represented.
- 50. Junior Get-of-Sire: Three (3) head shown in individual classes calved on or after September 1, 2007; and produced by one sire. May be owned by different exhibitors. Both sexes may be represented.
- 51. Senior Get-of-Sire: Four (4) head shown in individual classes; at any age; and produced by one sire. May be owned by different exhibitors. Both sexes may be represented.
- 52. Breeders' Best Five-Head: Five (5) head shown in individual classes and of any age. Must be bred by and owned or co-owned by a single exhibitor. Both sexes may be represented.

Section 7—OPEN FEEDER STEER SHOW
Open feeder steers judged Monday, August 17, 11:00 a.m.

All steers will be weighed at the time of check-in. All steers must be born after January 1, 2009, weaned before the show, and weigh between 350-650 pounds. All steers must be properly dehorned and castrated and must be halter-broken. Exhibitors may enter up to a maximum of five (5) head.

NOTE: Register all Feeder Steers as Dept. B, Section 7, Class 1.
Animals will be divided by weight at the fair.

PREMIUMS HAVE INCREASED!

Section 7A — Light Weight Steers

Classes 1-4: PREMIUMS (except championship classes)

1st	2nd	3rd	4th	5th
\$40	\$35	\$30	\$25	\$20

Class 5: CHAMPION LIGHT WEIGHT STEER - Rosette

Class 6: RESERVE CHAMPION LIGHT WEIGHT STEER - Rosette

PREMIUMS HAVE INCREASED!

Section 7B — Medium Weight Steers

Classes 1-4: PREMIUMS (except championship classes)

1st	2nd	3rd	4th	5th
\$40	\$35	\$30	\$25	\$20

Class 5: CHAMPION MEDIUM WEIGHT STEER - Rosette

Class 6: RESERVE CHAMPION MEDIUM WEIGHT STEER - Rosette

PREMIUMS HAVE INCREASED!

Section 7C — Heavy Weight Steers

Classes 1-4: PREMIUMS (except championship classes)

1st	2nd	3rd	4th	5th
\$40	\$35	\$30	\$25	\$20

Class 5: CHAMPION HEAVY WEIGHT STEER - Rosette

Class 6: RESERVE CHAMPION HEAVY WEIGHT STEER - Rosette

Class 7D - 1: GRAND CHAMPION FEEDER STEER OF SHOW - Banner

Class 7D - 2: RESERVE GRAND CHAMPION FEEDER STEER OF SHOW - Banner



Section 8—GELBVIEH

Gelbviehs will be judged Friday, August 21, 2:00 p.m.

Department B - Gelbveih

Rules

1. All animals must be registered with the American Gelbvieh Association. Only the original registration certificate or performance pedigree or performance summary will be accepted as proof of registration. **NO PHOTOCOPIES OR FAX** copies will be accepted.
2. All animals must be tattooed. Tattoos must be legible and properly match the animal's registration certificate.
3. All females must be 50% Gelbvieh or greater; all bulls must be 75% or greater. Percentage and purebred cattle shall compete in the same classes and championships.
4. No limitations are placed on the color or color pattern of any Gelbvieh entered in the show.
5. All animals shown in group classes must have shown in individual classes.
6. No unethical fitting will be tolerated. No paint or other color above the hocks, no lifting or filling under the skin, no artificial tailheads or unnatural building of legs. State Fair officials reserve the right to take blood samples and mouth all cattle.
7. All bulls 15 months of age and older should have veterinary proof of semen test/breeding soundness exam and proven as a satisfactory breeder. All bulls 12 months of age or older must be shown with a nose lead or ring. All females 18 months of age or older must be: a) certified pregnant by a licensed non-owner veterinarian, or b) have certification that she has been used in embryo transfer.
8. The WV Gelbvieh Association will contribute \$100.00 towards premiums in this section.

FEMALES

PREMIUMS (Except Championship Classes)

1st	2nd	3rd	4th	5th
\$53	\$48	\$44	\$39	\$35

1. Junior Heifer Calves, calved on or after January 1, 2009.
2. Winter Heifer Calves, calved November 1-December 31, 2008.
3. Senior Heifer Calves, calved September 1-October 31, 2008.
4. CHAMPION HEIFER CALF, Winners of Classes 1, 2 and 3 competing - Rosette.
5. RESERVE CHAMPION HEIFER CALF, remaining winners and second place heifer from Champion's Class competing - Rosette.
6. Late Summer Yearling Heifer, calved July 1-August 31, 2008.
7. Early Summer Yearling Heifer, calved May 1-June 30, 2008.
8. Late Junior Yearling Heifer, calved March 1-April 30, 2008.
9. CHAMPION INTERMEDIATE HEIFER, Classes 6, 7 and 8 competing - Rosette.
10. RESERVE CHAMPION INTERMEDIATE HEIFER, remaining winners and second place heifer from Champion's class competing - Rosette.
11. Early Junior Yearling Heifer, calved January 1-February 29, 2008.
12. Senior Yearling Heifer, calved September 1-December 31, 2007.
13. SENIOR CHAMPION, Winners of Classes 11 and 12 competing - Rosette.
14. RESERVE SENIOR CHAMPION, remaining winners and second place animal from Champion's class competing - Rosette.
15. Cow and Calf Class: Cow is to be in lactating stage and is to be exhibited with natural calf at side (calf may have been artificially inseminated but not embryo transplant). Calf must have been born January 1, 2009, or later and must be nursing. Cow/calf champion shall be eligible for overall champion female.
16. GRAND CHAMPION HEIFER - Banner.
17. RESERVE GRAND CHAMPION HEIFER - Banner.

BULL CLASSES

PREMIUMS: (Except Championship Classes)

1st 2nd 3rd 4th
\$53 \$48 \$44 \$39

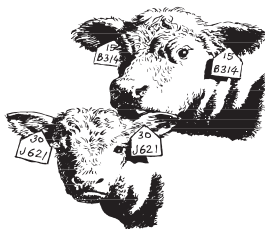
18. Junior Bull Calves, calved after January 1, 2009.
19. Winter Bull Calves, calved November 1-December 31, 2008.
20. Senior Bull Calves, calved September 1-October 31, 2008.
21. CHAMPION BULL CALF, winners of Classes 18, 19 and 20 competing - Rosette.
22. RESERVE CHAMPION BULL CALF, remaining winners and second place bull from Champion's class competing - Rosette.
23. Late Summer Yearling Bull, calved July 1-August 31, 2008.
24. Early Summer Yearling Bull, calved May 1-June 30, 2008.
25. Late Junior Yearling Bull, calved March 1-April 30, 2008.
26. INTERMEDIATE CHAMPION BULL, winners of Classes 23, 24 and 25 competing - Rosette.
27. RESERVE INTERMEDIATE CHAMPION BULL, remaining winners and second place bull from Champion's class competing - Rosette.
28. Early Junior Yearling Bull, calved January 1-February 29, 2008.
29. Senior Yearling Bull, calved September 1-December 31, 2007.
30. Two-Year-Old Bull, calved January 1-August 31, 2007.
31. SENIOR CHAMPION BULL, winners of Classes 28, 29 and 30 competing - Rosette.
32. RESERVE CHAMPION BULL, remaining winners and second place bull from Champion's Class competing - Rosette.
33. GRAND CHAMPION BULL - Banner.
34. RESERVE GRAND CHAMPION BULL - Banner.

GROUP CLASSES

PREMIUMS

1st 2nd 3rd 4th
\$53 \$48 \$44 \$39

35. Get-of-Sire: Three (3) animals, any age, either sex, sired by one sire. May be owned by more than one exhibitor.
36. Produce of Dam: Two (2) animals, either sex, any age, from one dam. Animals must be shown in individual classes to be eligible. Both owned by exhibitor.
37. Breeder's Herd: Four (4) animals, both sexes to be represented with a minimum of two (2) females. Must be owned or co-owned by exhibitor and exhibitor must be breeder or co-breeder. Animals must have been shown in breeding classes.
38. Best Four (4) Head - Four animals, either sex, any age, owned and exhibited by one exhibitor.



Section 9—TEXAS LONGHORNS

Longhorns will be judged Sunday, August 16, 9:00 a.m. - **HALTERED SHOW**

Rules

- NEW!** 1. All cattle registered with the International Texas Longhorn Association, Cattlemen's Texas Longhorn Registry or Texas Longhorn Breeders Association of America are eligible to compete in International Texas Longhorn Association Regional shows. A photocopy of the registration papers must accompany the International Texas Longhorn Association entry form. **No cattle with pending registration will be accepted.** Registrations other than ITLA will be charged an extra \$5.00 and this fee will be used to dual register, if so desired. Dual registration must be decided when entries are mailed for any show. All cattle competing in the annual International Championship Show must be registered with ITLA.
2. All animals must be branded. Brand must be the owners holding brand.
3. The ITLA's goal is to show longhorns in their natural condition with the exception of trimming prepuce hair and trimming hooves. Exhibitors are expressly prohibited from altering the physical appearance or features of any animal on show premises. Exhibitors are encouraged to bathe and brush their cattle and present them in a neat and professional manner. **Any animal physically altered on show premises will be removed from the show by the show chairman.**
4. Calves shown at side must be on halter and be led by an exhibitor. Animals must be kept under control at all times. Should an animal become unmanageable, the Judge shall have the right to remove such animal from competition and all entry fees shall be forfeited.
5. A calf shown with a cow shall not be older than 210 days of age. A calf shall be at least 180 days of age to show in individual classes. Calf at side may show only in one class as calf at side with dam or in individual class.
6. Pregnancy status and/or DOB of calf at side must appear on health certificates to confirm the eligibility of all female cattle 30 months and older entered in the show. Pregnancy status can be determined by palpation, ultrasound or blood test and reported by a licensed veterinarian or certified technician. In cases where no health certificates are required, the pregnancy status will be acceptable if reported on a letter (with letterhead identifying the facility) and signed by the veterinarian, which clearly identifies the animal(s). Any proof of pregnancy status must be dated within 30 days of the show in which the animal is entered.
7. All bulls are required to be shown with a nose lead.
8. All cattle shown must be haltered.
- NEW!** 9. **"ITLA POINT MERIT SYSTEM FOR ITLA High Point Show Legacy":** The ITLA will retain a permanent record of "competitively successful cattle" for special recognition, including annual and lifetime awards. The ITLA membership regions may earn local merit acknowledgement as well as international year-end competitive awards. The ITLA Office will maintain documentation of winnings per Point Rating System. See ITLA Standardized Rule Book for more details.
- NEW!** 10. **Fees:** In order to cover the costs of tabulating ITLA Merit points and providing the Legacy Awards, \$5.00 must be included for each entry in an ITLA approved Open Show. This fee, the official show book and a copy of the show program must be sent to the ITLA Office within 10 days of the show date.

FEMALES

PREMIUMS (Except Championship Classes)

1st	2nd	3rd	4th	5th
\$53	\$48	\$44	\$39	\$35

Junior Heifer Classes:

1. Born March - April of 2009, calf must be 180 days of age at show time.
2. Born January - February, 2009
3. Born November - December, 2008

4. Born September - October, 2008
5. Born July - August, 2008
6. Born May - June, 2008
7. Born March - April, 2008
8. Born January - February, 2008
9. CHAMPION JUNIOR HEIFER - Rosette
10. RESERVE CHAMPION JUNIOR HEIFER - Rosette

Note: Females over 30 months of age must be shown with calf at side or be verified safe in calf as outlined Rule 6. No crossbred calves may be shown at side of cows.

Senior Heifer Classes:

11. Born September - December, 2007
12. Born May - August, 2007
13. Born January - April, 2007
14. CHAMPION SENIOR HEIFER - Rosette
15. RESERVE CHAMPION SENIOR HEIFER - Rosette

Junior Cow Classes:

16. Born 2006
17. Born 2005
18. Born 2004
19. CHAMPION JUNIOR COW - Rosette
20. RESERVE CHAMPION JUNIOR COW - Rosette

Senior Cow Classes:

21. Born 2002 and 2003
22. Born 2000 and 2001
23. Born 1999 and before
24. CHAMPION SENIOR COW - Rosette
25. RESERVE CHAMPION SENIOR COW - Rosette
26. GRAND CHAMPION ALL AGE FEMALE - Banner
27. RESERVE GRAND CHAMPION ALL AGE FEMALE - Banner

A memorial award for Donald Legg will be given to the Grand Champion Mature Female of the Texas Longhorns. Donald was an avid Texas Longhorn breeder and worked to get a show in West Virginia before his tragic death. Sponsored by The Lazy L Farm, Renick, WV.

BULL CLASSES

Note: All bulls will be shown haltered and must have nose lead when shown without their dam.

PREMIUMS: (Except Championship Classes):

1st	2nd	3rd	4th
\$53	\$48	\$44	\$39

Junior Bull Classes:

28. Born March - April 2009, calf must be 180 days of age at show time
29. Born January - February 2009
30. Born November - December, 2008
31. Born September - October, 2008
32. CHAMPION JUNIOR BULL - Rosette
33. RESERVE CHAMPION JUNIOR BULL - Rosette

Intermediate Bull Classes:

- 34. Born July - August, 2008
- 35. Born May - June, 2008
- 36. Born March - April, 2008
- 37. Born January - February, 2008
- 38. Born September - December, 2007
- 39. CHAMPION INTERMEDIATE BULL - Rosette
- 40. RESERVE CHAMPION INTERMEDIATE BULL - Rosette

Senior Bull Classes:

- 41. Born May - August, 2007
- 42. Born January - April, 2007
- 43. Born May - December 2006
- 44. CHAMPION SENIOR BULL - Rosette
- 45. RESERVE CHAMPION SENIOR BULL - Rosette
- 46. GRAND CHAMPION ALL AGE BULL - BANNER
- 47. RESERVE GRAND CHAMPION ALL AGE BULL - BANNER

TROPHY STEERS

PREMIUMS: 1st: \$53 2nd: \$48 3rd: \$44 4th: \$39

Junior Steer Classes:

- 48. Born in 2009
- 49. Born July - December, 2008
- 50. Born January - June, 2008
- 51. Born July - December, 2007
- 52. Born January - June, 2007
- 53. Born January - December, 2006
- 54. CHAMPION JUNIOR STEER - Rosette
- 55. RESERVE CHAMPION JUNIOR STEER - Rosette

Senior Steer Classes:

- 56. Born January - December, 2005
- 57. Born January - December 2004
- 58. Born January - December 2003
- 59. All steers born 2002 and before
- 60. CHAMPION SENIOR STEER - Rosette
- 61. RESERVE CHAMPION SENIOR STEER - Rosette
- 62. GRAND CHAMPION ALL AGE STEER - BANNER
- 63. RESERVE GRAND CHAMPION ALL AGE STEER - BANNER

GROUP CLASSES

PREMIUMS

1st: \$53 2nd: \$48 3rd: \$44 4th: \$39

- 64. Produce-of-Dam: Two (2) or more animals from the same dam, any sex. Natural birth only - calves resulting from embryo transfer will not be eligible to compete in this class.
- 65. Get-of-Sire: Three (3) or more animals by the same sire, any sex.