



Department J — FINE ARTS & CRAFTS

SUPERINTENDENTS
JEANNIE BLAND, Ronceverte, WV
SHIRLEY BLAND, Ronceverte, WV
TERRI WEST, Beckley, WV

TOTAL PREMIUMS & PRIZES AWARDED—\$4,039.00

SUN	MON	TUES	WED	THUR	FRI	SAT
16	17 5 - 7 pm: Exhibit check-in 7 pm: Photo Judging	18 7 am: Judging of remainder of exhibits Exhibits on Display	19 1 pm: Scrapbook Challenge 6 pm - 8 pm: Christmas Tree Decorating	20 11 am: Shutter Bug Contest	21	22 8-9 pm:* Ex- hibit check-out
23 9 am - 3 pm: Exhibit check-out	24 9 am - 3 pm: Removal of Exhibits	25 9 am - 3 pm: Removal of Exhibits	26 9 am - 3 pm: Removal of Exhibits	27 9 am - 3 pm: Removal of Exhibits	28 9 am - 3 pm: Removal of Exhibits	29

**NO EXHIBITS WILL BE ACCEPTED OUTSIDE NORMAL CHECK-IN HOURS.
 EXHIBITS CANNOT BE PICKED UP BEFORE THE NORMAL PICK-UP HOURS.**

**No on-grounds parking for exhibit pick-up on Saturday, August 22.
 Any item not picked up by 3:00 p.m., Friday, August 28 will be discarded or given
 away.*

SHIPPED OR MAILED-IN EXHIBITS ACCEPTED

Shipped or mailed-in exhibits will be accepted in departments J and L only. Exhibits sent parcel post must be addressed to

Comp. Exhibits Dept.
 891 Maplewood Ave
 Fairlea, WV 24902

and be mailed in time to reach the Fair by Wednesday, August 5. A money order or check must be included to cover return postage and insurance of the exhibit. Claim check (lower part) should be left attached to exhibitors tag.

Please pay special attention to the sections designated Amateur and Professional. **"Amateur"** is defined as a recreational hobby, not for livelihood or occupational therapy. **"Professional"** is defined as involvement in a hobby that results in financial gain for the participant and the participant deems part of their livelihood.

Rules:

1. All articles must be the handiwork of the exhibitor and must be clean. Articles must have been made within the last two (2) years (unless otherwise stated) and be in good condition. Articles which have been previously exhibited in this department are not eligible for competition, except where noted.
2. **Exhibits that do not conform to rules will be disqualified.**
3. Articles improperly classified will not be judged.
4. When there is no competition a ribbon may be given (if worthy) with corresponding money paid. If in a class no exhibits are worthy, neither ribbons nor prize money will be awarded. The decision of the judges is final.
5. Fair officials will take every precaution for the safekeeping of exhibits after their arrival and arrangement in the building, but will not be responsible for any damage or loss that may occur.
6. Entry tags must be attached to exhibit prior to arriving on grounds for delivery. Tags will be mailed when entry forms are received.
7. Each exhibitor is limited to ONE (1) entry per class.
8. Age of contestant on July 18, 2009, determines the category for competition.

NEW!

New classes have been added for 2009 and can be recognized by the identification **NEW!** before the class name and/or description.

Section 1— AMATEUR ART - ADULT

All work must be an original. Number pictures not accepted except for classes 24, 29 & 34. Whenever possible, please cover your name so it is not visible on the exhibit. Artwork not to exceed 30" in any direction.

ADULT (Over 18 years of age)

PREMIUMS (Classes 1-18): 1st - \$10.00; 2nd - \$8.00; 3rd - \$7.00

1. Black and white—pencil or charcoal
2. Black and white—pen and ink
3. Oil painting—portraits, people
4. Oil painting—portraits, animals
5. Oil painting—still life
6. Oil painting—scenic

NEW!
NEW!

NEW!
NEW!

7. Pastel - chalk or colored pencil—portraits, people
8. Pastel - chalk or colored pencil—portraits, animals

NEW!

NEW!

NEW!

NEW!

NEW!

NEW!

NEW!

NEW!

NEW!

NEW!

9. Pastel - chalk or colored pencil—still life
10. Pastel - chalk or colored pencil—scenic
11. Water color—portraits, people
12. Water color—portraits, animals
13. Water color—still life
14. Water color—scenic
15. Acrylic painting—portraits, people
16. Acrylic painting—portraits, animals
17. Acrylic painting—still life
18. Acrylic painting—scenic

BEST OF AMATEUR ADULT ART, chosen from CLASSES 1-18: \$10 and Rosette



Section 2 — AMATEUR ART - JUNIOR

Artwork not to exceed 30" in any direction

PREMIUMS (Classes 20-34): 1st - \$7.00; 2nd - \$5.00; 3rd - \$4.00

JUNIORS (Under 9 years)

- 20. Sketching: black and white
- 21. Sketching: colored pencil
- 22. Painting
- 23. Pastel, chalk
- 24. Paint by Number - oils or acrylics

JUNIORS (9 through 13 years)

- 25. Sketching: black and white or colored pencil
- 26. Water color
- 27. Pastel, chalk or colored pencil
- 28. Acrylic Painting
- 29. Paint by Number - oils or acrylics



JUNIORS (14 through 17 years)

- 30. Sketching: black and white or colored pencil
- 31. Water color
- 32. Acrylic painting
- 33. Pastel, chalk or colored pencil
- 34. Paint by Number, oils or acrylics

BEST OF AMATEUR JUNIOR ART, chosen from CLASSES 20-34:
\$10 and Rosette

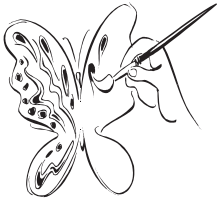
Section 3 — PROFESSIONAL ART

Artwork not to exceed 30" in any direction

ADULT (18 years of age and older)

PREMIUMS (Classes 36-37):
1st - \$10.00; 2nd - \$8.00; 3rd - \$7.00

- 36. Oil painting
- 37. Pastel, chalk or colored pencil



Section 4 - CREATIVE PAINTING - ANY MEDIA

Painting material and surface material are exhibitors choice. Artwork not to exceed 30" in any direction.

PREMIUMS (Classes 39-41 and 43):
1st - \$7.00; 2nd - \$5.00; 3rd - \$4.00

- 39. Creative painting — any media, Juniors 9 - 13 years of age
- 40. Creative painting—any media, landscape, juniors, 14 - 17 years of age
- 41. Creative painting—any media, still life, juniors, 14 - 17 years of age

BEST OF CREATIVE PAINTING JUNIORS, chosen from
CLASSES 39-41: \$10 and Rosette

- 43. Creative painting—any media, 18 years and older

Section 5 — AMATEUR WOODWORK - ADULT

PREMIUMS (Classes 44-51):

1st - \$7.00; 2nd - \$5.00; 3rd - \$4.00

- 44. Animals, not to exceed 20 inches in any direction
- 45. People, not to exceed 20 inches in any direction
- 46. Baskets made from wood, not to exceed 20 inches in any direction
- 47. Picture frames, no larger than 18" x 24"
- 48. Scrolling, not to exceed 20 inches in any direction
- 49. Woodburning - not to exceed 12"x12"x12"
- 50. Any other article not mentioned, not to exceed 20 inches in any direction
- 51. Walking stick

BEST OF AMATEUR WOODWORK - ADULT,
chosen from CLASSES 44-51: \$10 and Rosette



**Section 6 — AMATEUR WOODWORK - JUNIOR
(6 years through 17 years of age)**

PREMIUMS (Classes 53-54):

1st - \$7.00; 2nd - \$5.00; 3rd - \$4.00

- 53. Woodburning - not to exceed 12"x12"x12"
- 54. Any other article not mentioned, not to exceed 20 inches in any direction

BEST OF AMATEUR WOODWORK - JUNIOR,
chosen from CLASSES 53-54: \$10 and Rosette

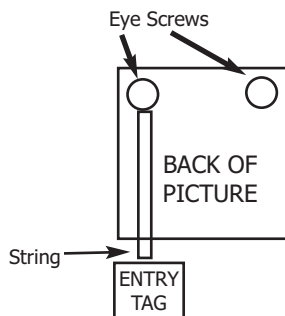
People's Choice Art Award

Fairgoers will be invited to choose their favorite piece of art and their ballots will determine the winner of the 3rd annual People's Choice Art Award. Votes will be accepted August 18-21 and the winner will be announced on Saturday, August 22 at 5:00 p.m. Only one vote will be allowed per person and only two votes per household.

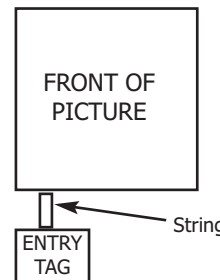
The winner will receive a special plaque and a \$25 cash award

PREPARING FRAMED EXHIBITS

All exhibits in Classes 1-37 must be framed and securely fixed with eye screws and wire for hanging. Items not properly fixed for hanging will not be accepted. (Saw tooth hooks are not acceptable.)



ATTACH ENTRY TAG AND TIE TO EYE-SCREW WITH STRING, ALLOWING TAG TO HANG JUST BELOW FRAME.



Section 7 — AMATEUR PHOTOGRAPHY - ADULT



RULES:

1. **PLEASE LIMIT ONE (1) ENTRY PER CLASS AND FIVE (5) TOTAL PHOTOGRAPHS PER EXHIBITOR.**
2. Judging will be done by the usual standards of subject matter, composition and photographic excellence. Composition and exposure must be the work of exhibitor, except that the developing and finishing may be done by anyone.
3. **MANIPULATION OF PHOTOGRAPHS IN ANY WAY IS STRICTLY PROHIBITED. NO COMPUTER ENHANCED IMAGES.**
4. Photos must be 5"x7" and matted on a **BLACK 8"x10" MAT BOARD.** No staples on mats.
5. If photo or mat does not meet requirements, photo will not be displayed.
6. Photos may be taken with a 35mm camera **or** a digital camera.
7. Failure to mount prints will result in disqualification.
8. **NO FRAMED PHOTOGRAPHS ACCEPTED.**

CLASSES DEFINED:

PEOPLE: Adults, children, babies, portraits and character studies or entire figures, alone or in a group where the main subject is the person or persons rather than the environment, closeups or as part of a large composition.

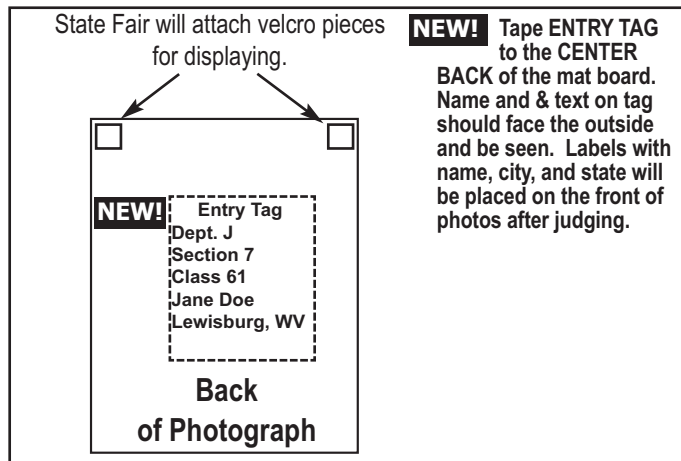
NATURE: Any subject found in nature, plants or flowers, closeups, etc.

SCENIC: Landscapes, seascapes, architectural and industrial scenes or any scene that has a fundamental unit of design or mood of such magnitude that all else is subordinate to it.

STILL LIFE: Table top photography, flowers, etc. Subject matter must be arranged by the photographer.

ANIMALS: Any animal(s) (pet, livestock, zoo, marine) in a natural setting. No posed, official show type photos.

CANDID: Unposed and informal



Section 7 - AMATEUR PHOTOGRAPHY

BLACK AND WHITE

PREMIUMS (Classes 56-69): 1st - \$7.00; 2nd - \$5.00; 3rd - \$4.00

- 56. People: candid, black & white
- 57. People: children, infants to 12 years old, black & white
- 58. People: action, black & white
- 59. People: human interest, black & white

- 60. Nature: flowers, plants, fruits and vegetables, black & white
- 61. Nature: birds, insects, black & white
- 62. Nature: sunrise, sunset, black & white

- 63. Scenic: landscape or seascape, black & white
- 64. Scenic: architectural/design features, i.e. monuments, bridges, vehicles, trains, etc., black & white
- 65. Scenic: nightscapes, black & white
- 66. Scenic: weather, black & white

- 67. Animals: domestic, including people with pets, black & white
- 68. Animals: wildlife, no pets, black & white

- 69. Still life: black & white

BEST BLACK AND WHITE, chosen from CLASSES 56-69: \$10 and a Rosette

NATURAL COLOR

PREMIUMS (Classes 71-85): 1st - \$7.00; 2nd - \$5.00; 3rd - \$4.00

- 71. People: candid, natural color
- 72. People: children, infants to 12 years old, natural color
- 73. People: action, natural color
- 74. People: human interest, natural color

- 75. Nature: flowers, plants, fruits and vegetables, natural color
- 76. Nature: birds, insects, natural color
- 77. Nature: sunrise, sunset, natural color

- 78. Scenic: landscape or seascape, natural color
- 79. Scenic: architectural/design features, i.e. monuments, bridges, vehicles, trains, etc., natural color
- 80. Scenic: nightscapes, natural color
- 81. Scenic: weather, natural color

- 82. Animals: domestic, including people with pets, natural color
- 83. Animals: wildlife, no pets, natural color

"FARM FRESH FUN!" THEME CLASS

- 84. Photograph, any color, any subject, best depicting the State Fair theme "FARM FRESH FUN!"; natural color

85. Still life: natural color

BEST NATURAL COLOR, chosen from CLASSES 71-85: \$10 and a Rosette

Section 8 — AMATEUR PHOTOGRAPHY - JUNIOR

PREMIUMS (Classes 87-94): 1st - \$7.00; 2nd - \$5.00; 3rd - \$4.00

JUNIORS (Under 12 years)

- 87. People
- 88. Nature
- 89. Scenic
- 90. Animals

JUNIORS (Ages 12 - 17 years)

- 91. People
- 92. Nature
- 93. Scenic
- 94. Animals

BEST OF YOUTH PHOTOGRAPHY,
chosen from CLASSES 87-94: \$10 and a Rosette

Section 9 — PROFESSIONAL PHOTOGRAPHY

PREMIUMS (Classes 96-105): 1st - \$7.00; 2nd - \$5.00; 3rd - \$4.00

- 96. People, natural color
- 97. Nature, natural color
- 98. Scenic, natural color
- 99. Still Life, natural color
- 100. Animal, natural color

- 101. People, black and white
- 102. Nature, black and white
- 103. Scenic, black and white
- 104. Still Life, black and white
- 105. Animal, black and white

BEST OF PROFESSIONAL PHOTOGRAPHY,
chosen from CLASSES 96-105: \$10 and a Rosette



2009 Amateur Shutter Bug Contest

When: Thursday, August 20
10:40 a.m. - sign up
11:00 a.m. - contest begins

Where: Department J in the West Virginia Building

Contestants: Must be 16 years of age or older.
One camera per family.

Contest: Limited to the first 10 fairgoers who sign up. Each contestant will be given a disposable camera and will have two (2) hours to scurry through the fairgrounds and take pictures they feel capture the spirit of agriculture, the State Fair, and the fair's theme "FARM FRESH FUN!" Contestants will report back to the sign-in location to turn in their cameras. Judging will take place Thursday evening. Photographs will be judged on the merit of the entire roll.

1st place - \$15
2nd place - \$10 3rd place - \$5

PHOTOGRAPHY TIPS


1. Figures should look into not out of the picture.
2. Give your fast-moving objects space in front of them so the object in motion has somewhere to go.
3. Most colorful, lightest or brightest elements of your picture are the ones considered the most important by viewers.
4. Your photo should have one main point of interest. A secondary subject may be used but be sure it doesn't distract from your main subject.
5. Avoid putting your center of interest in the center of your photo.
6. Don't clutter your photo, especially the background, with objects that distract from your main subject.
7. Objects in your picture, like fences, hills, trees, create visual lead lines. Use them to direct the feeling of motion in your photos.
8. A good camera angle can give your photo a strong point of view.
9. Divide your photos into 1/3 image areas and place the main subject in one of the areas instead of in the center of the photo.

People's Choice Photograph Award

Fairgoers will be invited to choose their favorite photograph and their ballots will determine the winner of the 3rd annual People's Choice Photo Award. Votes will be accepted August 18-21 and the winner will be announced on Saturday, August 22 at 6:00 p.m.

Only one vote will be allowed per person and only two votes per household.

The winner will receive a special plaque and a \$25 cash award



Section 10 — CERAMICS

PREMIUMS (Classes 109-113 and 115):

- 1st - \$7.00; 2nd - \$5.00; 3rd - \$4.00
- 109. Cast ceramics—fired, underglazed
- 110. Overglazed, decals, lusters, metallics
- 111. Stained, opaque, and/or translucent
- 112. Handbuilt piece, no larger than 12" in any direction
- 113. Wheel thrown piece, no larger than 12" in any direction
- BEST OF AMATEUR CERAMICS chosen from CLASSES 109-113: \$10 and Rosette
- 115. Any ceramic article made by a professional



Section 11 — DOLLS

Dolls may be no taller than 24"

PREMIUMS (Classes 116-117 and 119):

- 1st - \$7.00; 2nd - \$5.00; 3rd - \$4.00
- 116. Porcelain Dolls, NO KITS, clothing will not be judged (see Department L)
- 117. Dolls, any material, i.e. apple, felt, wood, etc.



BEST OF AMATEUR DOLLS,
chosen from CLASSES 116 and 117: \$10 and Rosette

- 119. Dolls, any material, not sewn, made by a professional



Section 12 — CHRISTMAS CRAFTS

PREMIUMS (Classes 120-129):

1st - \$7.00; 2nd - \$5.00; 3rd - \$4.00

- 120. Christmas Tree Ornaments, limit three (original design, no kits), up to 4"
- 121. Christmas Tree Ornaments, limit three (original design, no kits), no smaller than 4", no larger than 8"
- 122. Christmas packages, no larger than 10" x 14" and 3" thick.
- 123. Wreaths, Christmas Wreath - Material on wreath **NOT TO EXCEED 22"**. *Exhibit must be securely fixed with a hook for hanging.*
- 124. Christmas door decorations (no wreaths), no larger than 22" in any direction. *Must be securely fixed with a hook for hanging.*
- 125. Christmas Tree, no larger than 24" tall, any material
- 126. Decorated Christmas gift bag, made of paper
- 127. Decorated Christmas gift bag, made of fabric
- 128. Hand painted light bulb, Christmas theme, limit one (1)

129. STATE FAIR OF WEST VIRGINIA CHRISTMAS CARD Contest

Design an original image for a Christmas card. The design should relate to the Fair, but convey a holiday message. Size 6" x 9", horizontal or vertical mounted on poster board. May use any drawing or painting medium (charcoal, ink, acrylic, etc.). No computer generated art.

BEST OF CHRISTMAS CRAFTS, chosen from 120-129: \$10 and Rosette

"FARM FRESH FUN CHRISTMAS TREE!"

Decorate a Christmas Tree to match the theme of the Fair

Try your decorating abilities on a 6' Christmas tree to be displayed at the fair. The State Fair will provide Christmas trees, you bring the materials, decorate the tree, and you could win!

RULES:

1. All contestants must pre-register by 12 Noon on July 18, 2009, using an entry form.
2. Contestant must provide lights, all decorations, tree skirt and electrical cord(s). No lighted candles are allowed due to fire regulations. No glass ornaments will be allowed.
3. A tree stand and 6' artificial tree will be provided by the State Fair.
4. Trees must be decorated on Wednesday, August 19, between 6 p.m. and 8 p.m. followed by judging at 8 p.m. Decorations must be removed on Saturday, August 22, between 8 p.m. and 9 p.m.
5. **Limited to the first 5 entries.**

NEW! 6. All decorations must match the current theme, FARM FRESH FUN!

Please enter Dept J, Section 12, Class 131

Prizes: 1st : \$75 2nd: \$50 3rd: \$25
4th : \$20 5th : \$10



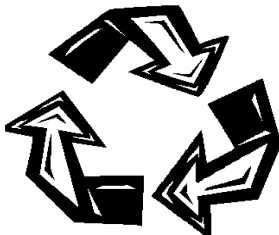
Section 13 — RECYCLED MATERIALS

PREMIUMS (Classes 132-135):

1st - \$7.00; 2nd - \$5.00; 3rd - \$4.00

- 132. Handmade item made from recyclable materials (metal) includes jewelry, not to exceed 20" in any direction
- 133. Handmade item made from recyclable materials (plastic) includes jewelry, not to exceed 20" in any direction
- 134. Handmade item made from recyclable materials (glass), includes jewelry, not to exceed 20" in any direction
- 135. Handmade item made from recyclable materials (other) includes jewelry, not to exceed 20" in any direction

BEST OF RECYCLED MATERIALS, chosen from CLASSES 132-135: \$10 and Rosette



Section 14 - DECORATED CLOTHING & ACCESSORIES

PREMIUMS (Classes 137-145):

1st - \$7.00; 2nd - \$5.00; 3rd - \$4.00

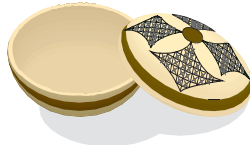
- 137. Painted designs on shirts, include hanger for display
- 138. Painted designs on sweatshirts, include hanger for display
- 139. Applied or decorated sweatshirts, NO PAINTED DESIGNS, include hanger for display
- 140. Applied or decorated cotton, silk or polyester shirts, NO PAINTED DESIGNS, include hanger for display
- 141. Tie-dyed T-shirt, include hanger for display
- 142. Decorated tote bags (applied or painted), include hanger for display
- 143. Decorated vests (applied or painted), include hanger for display
- 144. Decorated aprons (applied or painted), include hanger for display
- 145. Costume jewelry

BEST OF DECORATED CLOTHING & ACCESSORIES, chosen from classes 137-145: \$10 and Rosette

**SECTION 15 — DECORATED GOURDS - ADULT
(16 years of age and older)**

PREMIUMS (Classes 147-151):

- 1st - \$7.00; 2nd - \$5.00; 3rd - \$4.00
147. Painted Dried Gourds
 148. Mixed Media Dried Gourds
 149. Woodburned Dried Gourds
 150. Birdhouse Gourds
 151. Wildlife gourd, example: bird, reptile, animal, insect, etc.



BEST OF GOURDS - Adults, chosen from classes 147-151:
\$10 and Rosette

SECTION 16 — DECORATED GOURDS - JUNIOR

PREMIUMS (Classes 153 and 154):

- 1st - \$7.00; 2nd - \$5.00; 3rd - \$4.00
153. Decorated gourds, using any decorating material. Enter HATS and MASKS in classes 156 and 157. Ages 6 - 10
 154. Decorated gourds, using any decorating material. Enter HATS and MASKS in classes 156 and 157. Ages 11 - 15
- BEST OF GOURDS - Juniors**, chosen from classes 153-154: \$10 and Rosette



GROOVY GOURD CAP CONTEST

JUNIOR (6 through 12 years)

Create a one-of-a-kind gourd hat using a dried gourd.



RULES:

1. Hat must be made of any type of dried gourd.
2. HAT MUST FIT THE MAKER'S HEAD AND BE WEARABLE.
3. Exhibit may contain man-made items such as glitter.
4. Exhibitors must be under 13 years of age by July 18, 2009.
5. Exhibitors must pre-register using a State Fair of West Virginia entry form. All entry forms received after 12 Noon on Saturday, July 18, 2009, will not be processed.

Please enter Dept. J, Section 16, Class 156

PREMIUMS: 1st - \$12.00; 2nd - \$10.00; 3rd - \$8.00



GOURDS MADE INTO FABULOUS FACES CONTEST

JUNIOR (6 through 12 years)

Create a mask using a dried gourd.



RULES:

1. MASK MUST BE WEARABLE.
2. Mask may be any design: animal, human, alien, etc.
3. Exhibit may contain man-made items such as glitter.
4. Exhibitors must be under 13 years of age by July 18, 2009
5. Exhibitor must pre-register using a State Fair of West Virginia entry form. All entries received after 12 Noon on Saturday, July 18, 2009, will not be processed.

Please enter Dept. J, Section 16, Class 157

PREMIUMS: 1st - \$12.00; 2nd - \$10.00; 3rd - \$8.00

Section 17 — HOME DECOR AND ACCESSORIES

PREMIUMS (Classes 158-171):

- 1st - \$7.00; 2nd - \$5.00; 3rd - \$4.00
158. Hand-made flowers (no fresh or dried flowers accepted), silk, fabric, shell, glass, etc.
 159. Candles, original
 160. Painted Brick Doorstop
 161. Decorative Bows
 162. Wreaths, Spring/Summer. Material on wreath NOT TO EXCEED 22". *Exhibit must be securely fixed with a hook for hanging.*
 163. Wreaths, Fall/Winter. Material on wreath NOT TO EXCEED 22". *Exhibit must be securely fixed with a hook for hanging.*
 164. Wreaths, Holiday Theme, not Christmas. Material on wreath NOT TO EXCEED 22". *Exhibit must be securely fixed with a hook for hanging.*
 165. Wreaths, Natural Materials. Material on wreath NOT TO EXCEED 22". *Exhibit must be securely fixed with a hook for hanging.*
 166. Dried material, other than wreaths and floral arrangements. *Exhibit must be securely fixed with a hook for hanging.*
 167. Potpourri, handmade or homegrown. Essential oils for scent accepted; in container no larger than 6" in any direction (container will not be judged).
 168. Wall plaque, wood or other material. *Securely fixed with a hook for hanging, not to exceed 15" in any direction.*
 169. Handmade Soap.
 170. Flower Arrangements (no fresh or dried flowers accepted), silk, fabric, shell, glass, etc. Vase and flowers NOT TO EXCEED 25".
 171. Decorated Canvas floor cloth (mat), no larger than 36" x 24".



BEST OF HOME DECOR AND ACCESSORIES,
chosen from classes 158-171: \$10 and Rosette

Section 18 — OUTDOOR DECOR

PREMIUMS (Classes 173-179):

- 1st - \$7.00; 2nd - \$5.00; 3rd - \$4.00
173. Decorated wooden birdhouse (no larger than 12" x 12" x 12").
 174. Painted Patio Rock, not to weigh more than 1 pound.
 175. Painted Garden Stepping Stone, no larger than 12" in any direction.
 176. Decorated Clay flower pot (up to 5" in diameter).
 177. Decorated Clay flower pot (6" to 8" in diameter).
 178. Decorated Clay flower pot (9" to 12" in diameter).
 179. Painted wooden garden/yard sign, not to exceed 12" x 22", mounted on stake no taller than 36".
- BEST OF OUTDOOR DECOR - Chosen from classes 173-179: \$10 and Rosette**





Section 19 — PAPER CRAFTS

PREMIUMS (Classes 181-187):

1st - \$7.00; 2nd - \$5.00; 3rd - \$4.00

181. Collages, various materials pasted together to make a picture (frame exhibit using guidelines listed on page 13), not to exceed 18" x 22".

182. Greeting Cards.

183. Rubber Stamp Art

184. Quilling, not to exceed 15" in any direction.

185. Origami, not to exceed 15" in any direction.

186. Paper Mache, etc., not to exceed 15" in any direction.

187. Hand made paper, no larger than 8" x 10".

BEST OF PAPER CRAFTS - chosen from classes 181-187: \$10 and Rosette

Section 20 — SCRAPBOOKING

PREMIUMS (Classes 189-194):

1st - \$7.00; 2nd - \$5.00; 3rd - \$4.00

189. Scrapbook - Travel

190. Scrapbook - Sports

191. Scrapbook - Family

192. Scrapbook - Miscellaneous

NEW! 193. State Fair Memories Scrapbook

FAMILY HERITAGE CLASSES. If you enjoy researching your genealogy, here's a chance to show how much work you've done! Submit a family "tree" printed out with a minimum three (3) generations including names and any other information about each person. Frame exhibit according to the guidelines on page 13 or submit a family scrapbook filled with documented information on a minimum of three (3) generations of your family. Include anything that tells your family's story.

Class 194. Framed family tree (limited to first 12 entries)

Class 195. Family History scrapbook (limited to first 15 entries; family information & items only; all other scrapbooks in Classes 189 through 192)

Section 21 - SCRAPBOOK CHALLENGE

WEDNESDAY, AUGUST 19, 1:00 p.m.

Put your creativity to work! Create a scrapbook page from supplies provided by the Fair.

RULES:

1. All work must be completed in 20 minutes.
2. When contest begins, each contestant will receive a packet of supplies from which to create a scrapbook page. All supplies (including paper, scissors, and adhesives) will be provided. No other supplies may be used.
3. Contest limited to first nine (9) exhibitors to register.
4. All exhibits will be displayed and may be picked up at the normal check-out hours listed at the beginning of this department.

PREMIUMS: 1st - \$10.00; 2nd - \$8.00; 3rd - \$7.00



Section 22 — DECORATIVE PAINTING AND GLASS COLLAGE

PREMIUMS (Classes 197-203):

1st - \$7.00; 2nd - \$5.00; 3rd - \$4.00

197. Reverse glass collage, not to exceed 18" x 22"

198. Reverse glass painting, not to exceed 18" x 22"

199. Decoupage

200. Stained glass

201. Tole Painting, metal

202. Stenciled Article, household or clothing (no furniture)

203. Mosaics

BEST OF DECORATIVE PAINTING AND GLASS COLLAGE - chosen from classes 197-203: \$10 and Rosette

Section 23 — MISCELLANEOUS ADULT (Amateur Only)

PREMIUMS (Classes 205-208):

1st - \$7.00; 2nd - \$5.00; 3rd - \$4.00

205. Best display of State Fair of WV Ribbons

206. Basketry

207. Miscellaneous Metalcraft, any metal

208. Doll House, no larger than 24" in any direction, NO KITS

Section 24 — MISCELLANEOUS JUNIOR (6 through 12 years of age)

PREMIUMS (Classes 209-220): 1st - \$7.00; 2nd - \$5.00; 3rd - \$4.00

209. Hand-formed or molded ceramics

210. Collage (artistic composition made of various materials such as cloth, paper, wood and glued to a picture surface, FIXED TO HANG, no larger than 18" x 22".

211. Rubber Stamp Art

212. Quilling, not to exceed 15" in any direction.

213. Origami, not to exceed 15" in any direction.

214. Paper Mache, not to exceed 15" in any direction.

215. Jewelry made with purchased items such as beads.

216. Jewelry made with handmade items (such as paper beads, hand made clay shapes, etc.).

ALL LEGO ENTRIES must be mounted on a stable board according to size.

217. Lego Construction, completely original, on base (no larger than 12"x12"x14"), ages 6-9.

218. Lego Construction, completely original, on base (no larger than 12"x12"x14"), ages 10-14.

219. Lego Construction, from kit or pattern, on base (no larger than 12" x 12" x 14"), ages 6-9.

220. Lego Construction, from kit or pattern, on base (no larger than 12" x 12" x 14"), ages 10-14.

Section 25 — GARDEN SCARECROW CONTEST



NEW! Help our farmers scare off the deer in the garden. Create the meanest, scariest, most bewitching "old crow" you can in the Garden Scarecrow Contest!

RULES:

1. Scarecrow specifications: Height, 3 feet to 6 feet. Arm Span, total arm span not to exceed 4 feet including accessories.
2. Scarecrow must be secured to or combined with a 6-foot pointed stake. The State Fair will provide a 5-gallon bucket of sand for standing your scarecrow exhibit while it is on display.
3. Scarecrow is to be a traditional farm or garden variety made of hay, straw, or other natural materials. A pumpkin, melon, or traditional head may be used but must be securely fastened to the scarecrow's body. If material is used, faces may be painted, sewn, or drawn on burlap, cotton or muslin material.
4. Clothing for scarecrow should be traditional with optional hat, gloves, and shoes.
5. Only one entry per exhibitor.
6. Contest limited to first five (5) entries in each age group.
7. Decorations are welcome but must match the current theme, FARM FRESH FUN!

Age groups:

Class 221. Adults (ages 15 and older)

Class 222. Juniors (ages 6 through 14)

PREMIUMS: 1st - \$10.00; 2nd - \$8.00; 3rd - \$7.00



Section 26 — GIRL SCOUTS of The Black Diamond Council

Classes 223-233 are open to Girl Scouts who are members of the Black Diamond Council.

Age levels will be verified by membership records.

All entry forms must be submitted by 12 Noon on July 18, 2009.

PREMIUMS: 1st - \$7.00; 2nd - \$5.00; 3rd - \$4.00

S.W.A.P. (Sharing with a Pal) classes:

Swaps should not have any identification on item; must be no larger than 3" x 3" and must have a pin/clutch back for attachment. Items will be judged based on originality.

Class 223. S.W.A.P.'s for Daisy and Brownie Girl Scouts

Class 224. S.W.A.P.'s for Junior Girl Scouts

Class 225. S.W.A.P.'s for Cadette and Senior Girl Scouts

KNOTS classes: Project must consist of four types of knots labeled and displayed on no larger than 5" x 7" board.

Class 226. Knots for Daisy and Brownie Girl Scouts

Class 227. Knots for Junior Girl Scouts

Class 228. Knots for Cadette and Senior Girl Scouts

SIT-UPON classes: Project will be judged based upon originality and durability of sit-upon

Class 229. Sit-Upons for Daisy and Brownie Girl Scouts

Class 230. Sit-Upons for Junior Girl Scouts

RECYCLED MATERIALS classes: Crafts from Recycled Material

Class 231. Crafts from recycled materials for Daisy and Brownie Girl Scouts

Class 232. Crafts from recycled materials for Junior Girl Scouts

JEWELRY classes:

Class 233. Jewelry making for Cadette and Senior Girl Scouts.