

Department M — Amateur Flower Show

Department M - FLOWERS

SUPERINTENDENTS

JUNE SPROUSE, Lewisburg, WV
LYNNE TUCKWILLER, Lewisburg, WV
JEANIE WYATT, Lewisburg, WV

Total Premiums Offered – Department M – \$3,680.00

SUN	MON	TUES	WED	THUR	FRI	SAT	
9	10	11	12	13 4:30 pm - 7:30 pm: Exhibit check-in 8 pm - 11 pm: Judging of Exhibits	14 Exhibits on Display 9 am - 11 am: Table Setting Contest 11 am: Junior Arrangement Contest 1 pm: Teen Arrangement Contest	15 9 am - 9 pm: Mystery Flower Contest	
16 Exhibits on Display 3pm: Garden Party	17 3 pm - 4 pm: Exhibit check-out	NO FLOWERS WILL LEAVE BEFORE 3:00 P.M. ON MONDAY, AUGUST 17. Any item not picked up by Friday, August 28, at 3:00 p.m. will be discarded or given away.					22

Exhibits that do not conform to rules will be disqualified.

RULES:

- All exhibits must be grown by the exhibitor and labeled as to cultivar or variety.
- Articles improperly classified will not be judged.
- When there is no competition a ribbon may be given (if worthy) with corresponding money paid. If in a class no exhibits are worthy, neither ribbons nor prize money will be awarded. The decision of the judges is final.
- Fair officials will take every precaution for the safe keeping of exhibits after their arrival and arrangement in the building, but will not be responsible for any damage or loss that may occur.
- Articles must be properly tagged before arriving on grounds. Entry tags will be mailed when entry forms are received.
- Each exhibitor is limited to ONE (1) entry per class except in Section 7 - Roses, where a maximum of two (2) entries per class will be permitted.** Age of contestant on July 18, 2009, determines the category for competition.
- All exhibits must be checked in by the Superintendents. If exhibit is left prior to 4:30 p.m., on Thursday, August 13, exhibitor understands that exhibit is left at his/her own risk.
- All horticulture classes are open to any amateur grower. Commercial exhibitors not eligible.

NEW!

- Potted plants must have been in possession of exhibitor three (3) or more months prior to show. **Exhibitors must provide saucers and include with your potted plant display.**
- Containers for all cut specimens will be furnished by the Fair. Wedging is permitted.
- Only one (1) plant per container with exception of begonias, coleus, hanging plants & class #42 (*any large houseplant, container and plant size unlimited*).
- Plants should be groomed before exhibiting. Remove dead foliage and spent flowers. Exhibits in bad condition will not be accepted.
- Horticulture definitions:
 A Stalk is the stem of the plant;
 A Spike is a lengthened flower cluster (gladiolus);
 A Spray is a main stem with side branches and blooms on all sides.
- Judges may subdivide or combine Horticulture Classes by cultivar, color or type. Horticulture exhibits are judged for horticulture perfection, not just for size or age.

NEW!

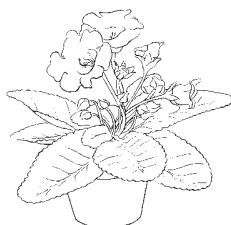
New classes have been added for 2009 and can be recognized by the identification **NEW!** before the class name and/or description.

PREMIUMS (Classes 1 through 203 except for Best of Show classes): 1st – \$5.00; 2nd – \$4.00; 3rd – \$3.00

Section 1 – AFRICAN VIOLETS

Single Crown

- African Violet, variegated or bicolor, single.
- African Violet, variegated or bicolor, semi-double or double.
- African Violet, red, single.
- African Violet, red, semi-double or double.
- African Violet, pink, single.
- African Violet, pink, semi-double or double.
- African Violet, white, single.



- African Violet, white, semi-double or double.
- African Violet, blue, single.
- African Violet, blue, semi-double or double.
- African Violet, purple, single.
- African Violet, purple, semi-double or double.
- African Violet, miniature, any color, single, semi-double or double.

BEST OF SHOW, African Violets, chosen from classes 1-13: \$25 and Rosette

Section 2 – POTTED PLANTS

All potted plants must have a saucer.

Foliage not to exceed 24" high and 20" wide. Pot not to exceed 10" in diameter (except Classes 33, 42 and 45).

Hangers must be removed from pots.

15. Begonia, tuberous, any variety
16. Begonia, wax, single, any color
17. Begonia, wax, double, any color
18. Begonia, any other variety not listed above

19. Bonsai

- NEW!**
20. Desert (cacti/succulent), dish garden
 21. Cactus, grafted
 22. Cactus, any variety, excluding Thanksgiving or Christmas cactus
 23. Cactus, Thanksgiving or Christmas variety

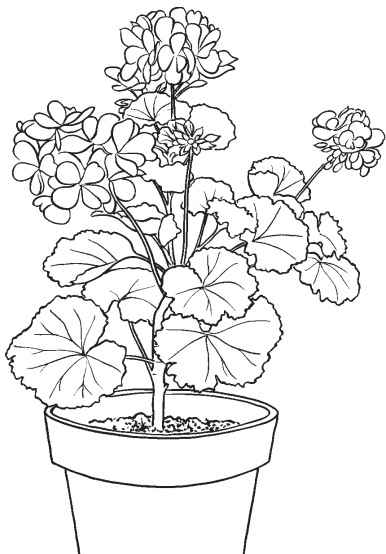
24. Coleus, green and white foliage
25. Coleus, any foliage except white

Geraniums - the dominant color of variegated blossoms determines class of entry.

26. Geranium, variegated foliage
27. Geranium, red
28. Geranium, white
29. Geranium, pink
30. Geranium, salmon
31. Geranium, fuchsia
32. Ivy Geranium, any color

33. Hen and Chicks, container size and shape unlimited
34. Impatiens, single, any color
35. Impatiens, double, any color
36. New Guinea Impatiens, any color

37. Jade plant
38. Peperomia
39. Houseplant with vining foliage, includes philodendron and Pothos
40. Succulents, except cactus, hen and chicks, and jade
41. House Plant, not listed
42. Any large houseplant, container and plant size unlimited
43. Ivy Topiary
44. Gloxinia, any color
45. Any potted plant, container size and plant size unlimited, grown by a senior citizen 70 years or older
BEST OF SHOW, Potted Plants, chosen from classes 15-45: \$25 and Rosette



Section 3 – CUT SPECIMEN

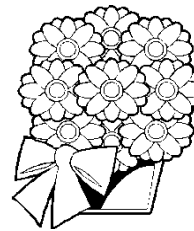
ALL SPECIMENS EXHIBITED MUST HAVE FOLIAGE

47. Ageratum, 3 stalks
48. Asters, double or fluffy, same color, 3 blooms
49. Bachelor Buttons, one color, 3 blooms

50. Calendula, any variety, 3 blooms
51. Celosia, crested, 1 stalk
52. Celosia, plumed, 1 stalk
53. Chrysanthemum, same color, 3 blooms
54. Cleome, same color, 3 stalks
55. Coneflower, same color, 3 blooms
56. Cosmos, 1 spray
57. Dusty Miller, 1 stalk

58. Gaillardia, single, same color, 3 blooms
59. Gerber Daisy, same color, 1 bloom
60. Gloriosa Daisy, same color, 3 blooms

61. Marigold, Carnation, any variety, orange, 1 bloom
62. Marigold, Carnation, any variety, yellow, 1 bloom
63. Marigold, Carnation, any variety, white, 1 bloom
64. Marigold, French, double dwarf, 1 spray, 3 blooms min., 5 blooms max.



65. Petunia, single, ruffled, red, 3 blooms
 66. Petunia, single, ruffled, white, 3 blooms
 67. Petunia, single, ruffled, pink, 3 blooms
 68. Petunia, single, ruffled, purple, 3 blooms
 69. Petunia, single, ruffled, yellow, 3 blooms
 70. Petunia, single, ruffled, bicolor, 3 blooms
 71. Petunia, double, ruffled, any color, 3 blooms

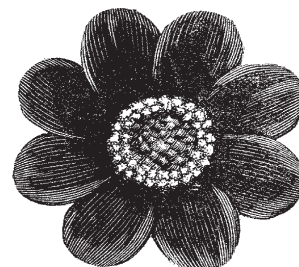
 72. Rudbeckia (Black-eyed Susan), 3 blooms

 73. Salvia, blue, 3 spikes
 74. Salvia, scarlet, 3 spikes
 75. Salvia, violet, 3 spikes
 76. Salvia, white, 3 spikes

 77. Shasta Daisy, same color, 3 blooms
 78. Snapdragon, any color, 1 spike
 79. Snapdragon, same color, 3 spikes
 - NEW!** 80. Snapdragon, miniature, 1 spike
 81. Statice, any color, 3 stalks
 82. Strawflowers, same color, 3 blooms

 83. Large Sunflower. Seed head diameter 8" or larger (must be fresh cut, live specimen, dried flowers will not be accepted)
 84. Sunflower. Seed head diameter less than 8" (must be fresh cut, live specimen, dried flowers will not be accepted)

 85. Yarrow, 1 stalk, yellow/gold
 86. Yarrow, 1 stalk, any other color than yellow or gold
- BEST OF SHOW, Cut Specimen - chosen from classes 47-86: \$25 and Rosette





Section 4 – ZINNIAS
ALL SPECIMENS EXHIBITED MUST HAVE FOLIAGE

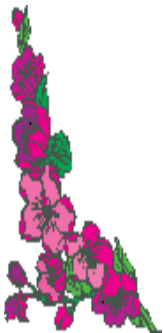
Classes #88-96 should be 2.5"-4" in diameter;
Classes #97-111 should be greater than 4" in diameter.



- 88. Zinnia, Lilliput or Pompon, any color, 3 blooms
 - 89. Zinnia, Dahlia, red, 3 blooms
 - 90. Zinnia, Dahlia, yellow, 3 blooms
 - 91. Zinnia, Dahlia, pink, 3 blooms
 - 92. Zinnia, Dahlia, white, 3 blooms
 - 93. Zinnia, Dahlia, purple, 3 blooms
 - 94. Zinnia, Dahlia, orange, 3 blooms
 - 95. Zinnia, Dahlia, variegated or bicolor, 3 blooms
 - 96. Zinnia, Dahlia, green, 3 blooms
 - 97. Zinnia, Giant Cactus, red, 1 bloom
 - 98. Zinnia, Giant Cactus, yellow, 1 bloom
 - 99. Zinnia, Giant Cactus, pink, 1 bloom
 - 100. Zinnia, Giant Cactus, white, 1 bloom
 - 101. Zinnia, Giant Cactus, purple, 1 bloom
 - 102. Zinnia, Giant Cactus, orange, 1 bloom
 - 103. Zinnia, Giant Cactus, variegated or bicolor, 1 bloom
 - 104. Zinnia, Giant Dahlia, red, 1 bloom
 - 105. Zinnia, Giant Dahlia, yellow, 1 bloom
 - 106. Zinnia, Giant Dahlia, pink, 1 bloom
 - 107. Zinnia, Giant Dahlia, white, 1 bloom
 - 108. Zinnia, Giant Dahlia, purple, 1 bloom
 - 109. Zinnia, Giant Dahlia, orange, 1 bloom
 - 110. Zinnia, Giant Dahlia, variegated or bicolor, 1 bloom
 - 111. Zinnia, Giant Dahlia, green, 1 bloom
- *BEST OF SHOW, Zinnias - chosen from classes 88-111: \$25 and Rosette

Section 5 – GLADIOLI

Vase of one spike, weighted if necessary:
Florets in classes #113-123 should be greater than 2-1/2"



- 113. Coral
- 114. Lavender
- 115. Maroon
- 116. Orange
- 117. Pink
- 118. Purple
- 119. Red
- 120. White
- 121. Yellow
- 122. Green
- 123. Variegated, any color
- 124. Miniature Gladiolus, any color. Florets should not exceed 2-1/2".

BEST OF SHOW, Gladioli, chosen from classes 113-124: \$25 and Rosette

Section 6 – DAHLIAS

ALL SPECIMENS EXHIBITED MUST HAVE FOLIAGE



- 126. Single, single row of petals, any color, one bloom
- 127. Cactus or semi-cactus, any size, same color, 3 blooms
- 128. Dahlia mixed colors, any size, form or shape, 3 blooms, any color
- 129. Miniature (landscape type) dahlia, any color, form or shape, less than 2 1/2"

Classes 130-136 Cactus or Semi-Cactus, should be 5" and over

- 130. Red, 1 bloom
- 131. White, 1 bloom
- 132. Yellow, 1 bloom
- 133. Orange, 1 bloom
- 134. Lavender or Pink, 1 bloom
- 135. Purple, 1 bloom
- 135. Blend or Bicolor, 1 bloom

Section 6 – DAHLIAS (continued)

Classes 137-143 Cactus or Semi-Cactus, should be 5" and under

- 137. Red, 1 bloom
- 138. White, 1 bloom
- 139. Yellow, 1 bloom
- 140. Orange, 1 bloom
- 141. Lavender or Pink, 1 bloom
- 142. Purple, 1 bloom
- 143. Blend or Bicolor, 1 bloom

Classes 144-150 Decorative, Formal or Informal, should be 5" and over

- 144. Red, 1 bloom
- 145. White, 1 bloom
- 146. Yellow, 1 bloom
- 147. Orange, 1 bloom
- 148. Lavender or Pink, 1 bloom
- 149. Purple, 1 bloom
- 150. Blend or Bicolor, 1 bloom



Classes 151-157 Decorative, Formal or Informal, should be 5" and under

- 151. Red, 1 bloom
- 152. White, 1 bloom
- 153. Yellow, 1 bloom
- 154. Orange, 1 bloom
- 155. Lavender or Pink, 1 bloom
- 156. Purple, 1 bloom
- 157. Blend or Bicolor, 1 bloom
- 158. Ball, 2" or more in diameter, any color, 1 bloom
- 159. Pompon, 2" and under in diameter, any color, 1 bloom

BEST OF SHOW, Dahlias, chosen from classes 126-159: \$25 and Rosette

Section 7 – ROSES

RULES:

- 1. Roses should be one-half to three-fourths open.**
- 2. EXHIBITORS ARE LIMITED TO TWO (2) EXHIBITS PER CLASS.**
- 3. A spray must contain two (2) or more blooms.**

- 161. Hybrid Tea, Grandiflora, or Floribunda, any color, 1 bloom
- 162. Hybrid Tea, Grandiflora, or Floribunda, any color, 1 spray
- 163. Miniature or Mini-Flora, any color, 1 bloom
- 164. Miniature or Mini-Flora, any color, 1 spray
- 165. Shrub Rose, any color, 1 bloom
- 166. Shrub Rose, any color, 1 spray
- 167. Climber, any color, 1 bloom
- 168. Climber, any color, 1 spray

BEST OF SHOW, Roses, chosen from classes 161-168: \$25 and Rosette





Section 8 – HANGING PLANTS

Container not to exceed 12" diameter. Length of hanger to pot not to exceed 36". Plants must have been grown together at least six (6) weeks.

- 170. Flowering Plants
- 171. Ferns, Boston
- 172. Ferns, any variety except Boston
- 173. Spider Plants
- 174. Other hanging plant not listed above

BEST OF SHOW, Hanging Plants, chosen from classes 170-174: \$25 and Rosette

Section 9 – JUNIOR HORTICULTURE

Juniors - Exhibitors must be under 13 years as of July 18, 2009.

- 176. Asters, same color, 3 blooms
- 177. Cosmos, 1 spray
- 178. Dahlia, any type, 5" and over, 1 bloom
- 179. Dahlia, any type, under 5", 1 bloom
- 180. Gladiolus, any color, 1 spike

- 181. Marigold, Carnation, any variety or any color, 1 bloom
- 182. Marigold, French double dwarf, should have at least 3 blooms, but not more than 5, 1 spray

- 183. Petunia, single, same color, 3 blooms.
- 184. Snapdragon, any color, 1 spike.

- 185. Zinnia, Lilliput or Pompon, same color, 3 blooms.
- 186. Zinnia, Giant Cactus, any color, should be 4" or greater in diameter, 1 bloom
- 187. Zinnia, Dahlia, same color, should be 2 1/2"- 4" diameter, 3 blooms
- 188. Zinnia, Giant Dahlia, any color, should be 4" or greater in diameter, 1 bloom
- 189. Largest Sunflower, winners will be judged by largest circumference. Must be fresh cut, live specimen. Dried sunflowers will not be accepted. 1 bloom

Teens - Exhibitors must be 13 years as of July 18, 2009 and under 18 years by July 18, 2009.)

- 190. Asters, same color, 3 blooms
- 191. Cosmos, 1 spray
- 192. Dahlia, any type, 5" and over, 1 bloom
- 193. Dahlia, any type, under 5", 1 bloom
- 194. Gladiolus, any color, 1 spike

- 195. Marigold, Carnation, any variety or any color, 1 bloom
- 196. Marigold, French double dwarf, should have at least 3 blooms, but not more than 5, 1 spray

- 197. Petunia, single, same color, 3 blooms
- 198. Snapdragon, any color, 1 spike

- 199. Zinnia, Lilliput or Pompon, same color, 3 blooms
- 200. Zinnia, Giant Cactus, any color, should be 4" or greater in diameter, 1 bloom
- 201. Zinnia, Dahlia, same color, should be 2 1/2"- 4" diamter, 3 blooms
- 202. Zinnia, Giant Dahlia, any color, should be 4" or greater in diameter, 1 bloom
- 203. Largest Sunflower, winners will be judged by largest circumference. Must be fresh cut, live specimen. Dried sunflowers will not be accepted. 1 bloom



Lewisburg Floral and Gifts presents.. ...

Best Junior Horticulture Arrangement.

All materials for the Junior Arrangement class are provided by Lewisburg Floral and Gifts.

PREMIUMS for class 204: 1st-\$15; 2nd-\$10; 3rd-\$5

RULES:

1. Limited to the first 12 entries. Exhibitors must be under 13 year of age as of July 18, 2009.
2. Exhibitors will meet Friday, August 14, at 11:00 a.m. in the West Virginia Building. Each entrant will receive instruction and materials for creating an arrangement. Special prizes will be awarded to the top three winners.

Please enter Department M, Section 9, Class 204

Best Teen Arrangement.

All materials for the Teen Arrangement class are provided by Lewisburg Floral and Gifts.

PREMIUMS for class 205: 1st-\$15; 2nd-\$10; 3rd-\$5

RULES:

1. Limited to the first 12 entries. Exhibitors must be 13 years old and have not reached their 18th birthday as of July 18, 2009.
2. Exhibitors will meet Friday, August 14, at 1:00 p.m. in the West Virginia Building. Each entrant will receive instruction and materials for creating an arrangement. Special prizes will be awarded to the top three winners.

Please enter Department M, Section 9, Class 205



Champion Junior Horticulturist

This award goes to the junior exhibitor winning the most points in classes 176-189. If a tie exists, the judge will determine the winner.

POINTS for the Best Junior Horticulture Grower

Blue Ribbon = 3 points

Red Ribbon = 2 points

White Ribbon = 1 point

PREMIUMS for the Best Junior Horticulture Grower

1st = \$50; **2nd** = \$30; **3rd** = \$20

Section 10 – ARRANGEMENTS

RULES:

1. All arrangements are open to any amateur. Professionals are not eligible.
2. A 3"x5" note card must accompany the arrangement listing materials and any interpretation or narrative.
3. Accessories are left at the risk of the exhibitor.
4. Plant material used in arrangements is not limited to that material grown by the exhibitor.

PREMIUMS for Adult Arrangements (classes 207-210):

1st - \$10; 2nd - \$7; 3rd - \$5

207. "FARM FRESH FUN" Fresh Flower Arrangement. Flowers must be displayed in a quart canning jar. Accessories are allowed. Display must not exceed 30" in height, 14" in depth, and 20" in width.
208. "Farmer's Market" - Front view only. All fresh plant material (may include vegetables and fruit). Container must be a basket. Not to exceed 30" in height, 14" in depth, and 20" in width. No accessories allowed.
209. "A Farmer's Summer Blessing" All Fresh Plant Material. Container (one container only) must be a watering can. Not to exceed 30" in height, 14" in depth and 20" in width. No accessories allowed.
210. "Fun on the Farm" (For Men Only) All fresh plant material. Not to exceed 30" in height, 14" in depth and 20" in width. Container is exhibitor's choice. Accessories are permitted but must be within measurements.

BEST OF SHOW, Adult Arrangements,
chosen from classes 207-210: \$25 and Rosette

Section 11 –

DISPLAY OF CUT FLOWERS AND POTTED PLANTS

212. This display must consist of no less than 15 and no more than 20 different kinds of flowers and potted specimens grown by the exhibitor. Arrangements made in one container that consists of the same flower but different colors of that flower will count as one plant of the required 15-20. (Example: Bouquet of zinnias will count as one but a bouquet of baby's breath and zinnias will count as two or a bouquet of sunflowers, zinnias and greenery will count as three.) Only one container of any species of plant will be allowed. (example: two different pots containing jade plants or two different containers of zinnias will not be allowed). The display will be judged for quality, quantity, and variety; general appearance of the exhibit will be considered. The maximum width of the display must not exceed 36". Space will consist of five (5) shelves (bleacher fashion), 7" in depth. Limited to first six (6) entries.

PREMIUMS: 1st - \$50; 2nd - \$40; 3rd - \$30;
4th - \$25; 5th - \$20; 6th - \$15

Section 12 – WINDOW BOXES

213. This display may consist of as many potted plants and flowers, grown by the exhibitor, in a window box. **Plants must be raised together in the window box. Those exhibits not raised as a unit in the box will be disqualified.** The exhibitor's window box must fit into the window box provided by the fair. The length of the window box is 32", height is 6 1/2", and the width is 6 1/2". The display will be judged for quality, variety, and general appearance of the exhibit. Limited to first 10 entries.

PREMIUMS: 1st - \$50; 2nd - \$40; 3rd - \$30

Section 13 – PATIO POTS

214. This display must consist of no less than two (2) and no more than five (5) different kinds of flowers and potted specimens grown together by the exhibitor in a patio pot. The patio pot must be at least 12" in diameter but no larger than 20" in diameter. The display will be judged for quality, variety, and general appearance of the exhibit.

PREMIUMS: 1st - \$30; 2nd - \$25; 3rd - \$20



Section 14 – LIVING WREATH

215. Plants must be raised as a wreath and have a hanger attached to wreath.

PREMIUMS for Section 14: 1st - \$20; 2nd - \$15;
3rd - \$10

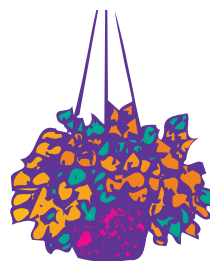


Section 15 – BAG PLANTER

216. Plant displayed must be raised as a unit in a plastic bag planter.

PREMIUMS for Section 15: 1st - \$10; 2nd - \$7; 3rd - \$5

Section 16 - Hanging Garden



217. Hanging planter must have at least seven (7) different annual flowers and accent plants (no maximum) in a minimum 12" diameter and maximum 16" diameter hanging basket. The display will be judged for quality, variety, originality, maintenance and overall appearance of your basket. The basket can be any kind including plastic, coco fiber, moss lined or hand crafted as long as it meets size requirements.

PREMIUMS for Section 16: 1st - \$50; 2nd - \$35; 3rd - \$25





Presents....
A Picnic on the Farm

Design a Party Table Setting for two, using a Farm Fresh Fun! theme to create the perfect table setting with a fresh flower arrangement and your choice of place settings.

RULES:

1. Setting will be staged on a table 32" diameter with a 30" drop, provided by the Fair.
2. Exhibitor must provide all materials including floor length tablecloth (legs of table may not show in display), dinnerware (plastic not acceptable), floral arrangement (must be fresh flowers), etc.
3. Open to amateurs only.
4. Place settings will be judged on artistic design, floral arrangement, and originality. Skillful handcraftsmanship by the exhibitor of any element of the table setting will be given positive consideration in judging.
5. Please include a menu suitable for your table setting. Menu should be legible and not smaller than 4" x 5".
6. Please mark (inconspicuously) your container(s) and **DO NOT USE VALUABLE ACCESSORIES.** The State Fair of West Virginia will not be responsible for damage or loss of property, though reasonable care will be taken to protect all materials exhibited.
7. All exhibitors must pre-registered using a State Fair of West Virginia entry form. All entry forms must be received by 12 Noon on Saturday, July 18, 2009.
8. Exhibits must be picked up on Monday, August 17, between 3 p.m. and 4 p.m.
9. **LIMITED TO FIRST 12 ENTRIES.**
10. Tables must be decorated on Friday, August 14, between 9 a.m. and 11 a.m. **NO EXCEPTIONS**

NEW!

Judging will be held on Friday, August 14, at 12 Noon.

Prizes: 1st - \$75; 2nd - \$65; 3rd - \$50; 4th - \$30; 5th - \$15; 6th - \$10; 7th - \$10; 8th - \$10; 9th - \$10; 10th - \$5; 11th - \$5; 12th - \$5

Please enter Dept. M, Section 17, Class 218



WAGON FLOWER GARDEN

Your original flower garden raised in a wagon!

RULES:

1. Wagon must not exceed 36" in length and 24" in width.
2. All plants must be grown in the wagon. If plants are transplanted in wagon just for judging purposes, this entry will be disqualified.
3. The wagon of flowers will be judged for quality, quantity, variety of plant material, and general appearance of display.

Prizes: 1st - \$75; 2nd - \$50; 3rd - \$25
Please enter Dept. M, Section 17, Class 220



MYSTERY FLOWER CONTEST

WHEN: Saturday, August 15, 2009, Continuously from 9 a.m. until 9 p.m.

WHERE: Department M in the West Virginia Building

ENTRANTS: Children ages 5-12

Can you identify different types of flowers? Do you know how to tell a flower by its smell?

CONTEST & PRIZES: You are invited to test your skills in our "Mystery Flower" contest. By correctly identifying the "mystery" flower, you can win a packet of seeds to plant in your garden. Quantities are limited. One packet of seeds per child.

8th Annual People's Choice Flower Award



Fairgoers are invited to choose their favorite flowers and cast their ballots to determine the winner of the

8th annual *People's Choice Award*.

Votes will be accepted Friday, August 14, through 6:00 p.m. on Sunday, August 16. The winner will be announced on Monday, August 17, following the completion of vote counting. Only one vote will be allowed per person and only two votes per household.

The winner will receive a \$35 cash award and plaque.



“Going to a Garden Party”

Sunday, August 16, 2009
 at
 3 o'clock in the Afternoon
 Your presence is requested
 At the
 Flower Show
 In the
 West Virginia Building
 At the
 State Fair of West Virginia

NEW!

Please bring a “Garden Party Hat” decorated with Fresh Flowers. Flowers must have been grown locally but hat may be accented with purchased flower. Hats must be able to be worn by judges. Please have hats ready for display when you arrive with exhibit. Each exhibitor will be given time to do the final touches on hat before judging. Your creation will be judged on creativity and appearance. Your hat will be on display until 3 o'clock on Monday, August 17, 2009 at which time exhibitor must pick it up. All exhibitors must pre-register using the State Fair of WV entry form. Entries must be received by 12 noon July 18, 2009. **LIMITED TO THE FIRST TEN ENTRIES.**

PREMIUMS: 1st - \$30; 2nd - \$20; 3rd - \$15

Please enter Dept. M, Section 17, Class 221



“Bloom in Buckets”

A Flower garden must be raised in a bucket.
NO PLASTIC BUCKETS ALLOWED.
 Judges will check to see that all plants were raised together in bucket. Those exhibits with plants not raised together in bucket will be disqualified. The display will be judged for quality, variety, and general appearance of the exhibit.

PREMIUMS: 1st - \$30; 2nd - \$20; 3rd - \$15

Please enter Dept. M, Section 17, Class 222

**MARY BELL MEMORIAL
 AWARD**

sponsored by Mike and Jeanie Wyatt

Mary Bell (1912 - 2003) was an exhibitor in Department M for over 60 years. She was a certified flower judge, active garden club member and known throughout the community for her beautiful artistic flower arrangements. When her health failed and she had to move to an assisted living facility, she continued to enter flowers that she was able to raise in her room and each year won ribbons. The State Fair flower show held a very special place in her heart and this award will be presented annually in her honor. This award will be presented to the adult exhibitor who wins the most points in Department M.

2008 Winner - *Ms. Bevin Marshall
 Floyd, VA*

Points for the Mary Bell Memorial Award
 Blue Ribbon = 3 points
 Red Ribbon = 2 points
 White Ribbon = 1 point

Prizes: \$50 with Rosette and Plaque

A large permanent plaque with the winner's name will be displayed in the administrative building during the off-season and in the flower show during the annual fair.